

**APY1501** ( 498453) October/November 2016

**THE ANTHROPOLOGICAL STUDY OF CULTURE IN A MULTICULTURAL  
CONTEXT**

Duration 2 Hours

60 Marks

**EXAMINERS**

FIRST

SECOND

MR GH MAREE

MS JMF WOUTERS

---

Closed book examination

This examination question paper remains the property of the University of South Africa and may not be removed from the examination venue

This paper consists of 17 pages plus instructions for the completion of a mark reading sheet

**THIS EXAMINATION PAPER REMAINS THE PROPERTY OF THE UNIVERSITY OF  
SOUTH AFRICA AND MAY NOT BE REMOVED FROM THE EXAMINATION ROOM**

**PLEASE COMPLETE THE ATTENDANCE REGISTER ON THE BACK PAGE, TEAR  
OFF AND HAND TO THE INVIGILATOR**

- 1 Answer **ALL** the questions Fill in your answers on the **MARK READING SHEET**
- 2 **ONLY ONE** option per multiple-choice question must be selected **NO MARKS** will be given if more than one option is included in an answer
- 3 All multiple-choice questions count **ONE MARK PER QUESTION**

**QUESTION 1**

Select the option that **CORRECTLY** completes the following statement

**Anthropology** as an independent discipline is distinguished from other disciplines which study human life by the fact that anthropology is concerned with the

- 1 study of human communities of prehistoric and historic times
- 2 study of particular aspects of human existence
- 3 classification of people in terms of their inferiority and superiority
- 4 entire human condition

**QUESTION 2**

Select the option that **CORRECTLY** completes the following statement

Linguistic anthropologists

- 1 study relations between members of a language group in terms of culture
- 2 mainly focus attention on the evolution of languages in prehistorical societies
- 3 study the way in which language is used in different social contexts
- 4 mainly focus on the influence of genetic factors on the development of language

**QUESTION 3**

Select the option that **CORRECTLY** completes the following statement

Archaeology as a subfield of anthropology studies

- 1 fossil remains of prehistoric human-like beings which have been preserved in the earth's crust
- 2 the development of human beings from very early times
- 3 the physical adaptation of human populations to their environment
- 4 past living conditions and changes that occurred in human populations during prehistoric times

**QUESTION 4**

Select the option that **CORRECTLY** completes the following statement

**Sociocultural** anthropologists study

- 1 sociocultural variation of human systems around the world
- 2 the influence of biological and demographic factors on the behaviour of members of a society
- 3 the culture of societies to establish their inferiority and superiority in relation to each other
- 4 culture change that occurred in human societies during prehistoric times

**QUESTION 5**

Select the option that **CORRECTLY** completes the following statement

If an excessively **cultural relativistic** approach is followed in anthropology

- 1 cultural practices that have a harmful impact on a society might not be questioned
- 2 the researcher might adopt an ethnocentric approach to the study of people
- 3 statistical data relevant to an investigation might be misinterpreted
- 4 the researcher's beliefs might influence the results of his/her investigation

**QUESTION 6**

Select the option that **CORRECTLY** completes the following statement

The most important sources of information on a particular sociocultural system are

- 1 those in a society who are directly involved in the aspects under investigation
- 2 statistical surveys and questionnaires
- 3 key informants (experts) on the history and culture being studied
- 4 community leaders and 'outsiders' who, through long and intensive involvement with a group, have become well-informed

**QUESTION 7**

Which one of the following combinations pertaining to anthropological method and explanation has been linked **CORRECTLY**?

1	Social network analysis	The questioning of informants about relatives to reconstruct family histories
2	Genealogical method	The questioning of informants regarding how other community members view the world
3	In-depth interviewing	The gathering of information mainly through quantitative strategies
4	Participant observation	The immersion of the researcher in the daily lives of the people being studied

**QUESTION 8**

Select the option that **CORRECTLY** completes the following statement

An **holistic approach** to the study of culture means that anthropologists

- 1 attempt to obtain an overall impression of the development of culture
- 2 draw generalisations about the human condition
- 3 study the cultural systems of societies within a global cultural pattern
- 4 study all facets of human life, including the environmental factors to which people must adapt for survival

**QUESTION 9**

From the options below, select the concept that **CORRECTLY** completes the following statement

The anthropological principle of \_\_\_\_\_ allows anthropologists to be perceptive of the specific way in which societies develop their sociocultural systems according to their needs and local situations

- 1 holism
- 2 cross-cultural comparison
- 3 cultural relativism
- 4 ethnocentrism

**QUESTION 10**

Which one of the following **best** illustrates how an application of the concept of cultural relativism influences the work of anthropologists? An anthropologist

- 1 determines which one of two cultural groups has developed a more effective approach to combating crime
- 2 compares the social structure and social behaviour of different social groups
- 3 interprets the behaviour of people in terms of the sociocultural context in which the behaviour is found
- 4 demonstrates how a social group's culture has been influenced by other social groups with which it has been in contact

**QUESTION 11**

Select the option that **CORRECTLY** completes the following statement

**Ethnographic fieldwork** as research method in anthropology

- 1 refers to a comparative study of culture
- 2 is used to gather information on the culture of societies by means of the interviewing of informants and participant observation
- 3 is primarily used to undertake statistical surveys and social network analysis
- 4 has as its aim the recording of people's own view of their culture

**QUESTION 12**

Read the following paragraph and then answer the question that follows

*With the colonisation of Africa, the European colonial governments regarded their own sociocultural systems as "civilised" and superior to those of the Africans and in many cases initiated concerted processes of Christianisation, education, and more pertinently, general sociocultural change*

What do the perceptions and behaviour of colonial governments described above exemplify?

- 1 Multivocality
- 2 Ethnocentrism
- 3 Cultural relativism
- 4 Reflexivity

**QUESTION 13**

Select the option that **CORRECTLY** completes the following statement

Africa is currently failing to produce enough food to feed its own populations. Problems associated with and reasons for this failure which have been identified, include all of the following **EXCEPT** a

- 1 lack of proper leadership
- 2 widening gap between the rich and the poor
- 3 need for constitutional reform
- 4 lack of training among subsistence farmers regarding improved crop production

**QUESTION 14**

Select the option that **CORRECTLY** completes the following statement

Based on sound anthropological knowledge of the local people and the natural environment, the famine in the 1960s in the Sahel region of Africa could have been avoided if the

- 1 government planners had concentrated on increasing the number of wells in the region
- 2 nomadic pastoralists of the Sahel had been encouraged to settle in urban areas
- 3 government had included knowledge of the culture and ecology of the people concerned in its planning
- 4 international relief programmes that were launched to alleviate the crisis, had supplied food relief in the form of grain

**QUESTION 15**

Select the option that **CORRECTLY** completes the following statement

All of the following perspectives or approaches are characteristic of anthropology, **EXCEPT**

- 1 an emic approach which takes cognisance of the way in which the people being studied perceive and categorise the world
- 2 a comparative approach that brings similarities and differences between human populations to the fore
- 3 the concept of sociocultural systems that anthropologists use to try to understand the ways in which people organise their lives
- 4 a research method which enables the anthropologist to produce quantitative data by means of statistical methods, surveys and questionnaires

**QUESTION 16**

Read the following paragraph and then select the option that **CORRECTLY** completes the statement that follows

*I can still remember how I experienced some anxiety during a service of the Zionist Christian Church whilst I was doing fieldwork in the Limpopo Province. Although I had done a fair amount of reading about the services of this particular church, I did not know what to do when the minister asked us to pray. When I stood up, which is what I was accustomed to, the other people kneeled, lent forward and said something. The service lasted about six hours during which people came and left. I however did not know if I, as guest, could just disappear considering the hearty welcome I received at the beginning.*

The experience of the anthropologist, outlined in this paragraph, is best described by the term

- 1 culture shock
- 2 reflexivity
- 3 participant observation
- 4 disorientation

**QUESTION 17**

Select the option that **CORRECTLY** completes the following statement

The hominid line includes

- a *Australopithecus afarensis*
- b *Homo erectus*
- c *Homo habilis*
- d *Homo sapiens*
- e *Australopithecus africanus*

Select the **CORRECT** combination

- 1 b, c, d and e
- 2 c and d
- 3 a, b, c, d and e
- 4 a, c and d
- 5 a, b and e

**QUESTION 18**

Which one of the following combinations of **human classification and characteristics** is **CORRECT**?

1 Hominids	Dwellings made of piled stone or bushes, a highly developed toolkit and, possibly, the use of fire
2 Hominoids	Upright posture which sets the hands free to carry things and manipulate the environment
3 <i>Homo erectus</i>	Developed a remarkable toolkit of fine projectile points and hunted big-game animals by hurling spears
4 <i>Homo sapiens</i>	Developed rituals and normative rules such as the incest taboo

[TURN OVER]

**QUESTION 19**

Select the option that **CORRECTLY** completes the following statement

Anthropologists generally agree that the concept of a **race**

- 1 comprises a human population differing geographically, morphologically or genetically from other human populations
- 2 cannot be defined biologically and regard perceptions of race as sociocultural constructions
- 3 comprises a human population within which the genetic variation is less than the genetic variation between the population and other human populations
- 4 explains the innate behavioural characteristics which are attributed to various human populations

**QUESTION 20**

Which one of the following statements about **images and perceptions of the body** is **CORRECT**?

- 1 Tattooing is used universally to signify status and prestige
- 2 The increasing objectification of male bodies is indicative of a shift in the sociocultural ideal of beauty from women to men
- 3 Human bodies are fashioned by sociocultural systems and contexts
- 4 Circumcision as ritual is universally performed to symbolically transform boys into men

**QUESTION 21**

Which of the following statements about **female genital mutilation** are **CORRECT**?

- a Genital cutting is done to deny women sexual pleasure
- b The practice is often enforced by women in an attempt to control the perceived rampant sexual desires of women
- c The practice occurs particularly among African Muslims
- d Genital cutting is **not** universally condemned as an infringement of universal human rights

Choose the **CORRECT** combination

- 1 a and d
- 2 b and c
- 3 a, b and c
- 4 a, b, c and d

**QUESTION 22**

Select the option that **CORRECTLY** completes the following definition

The scientific study of people's perception and use of space is called

- 1 body politic
- 2 kinesics
- 3 proxemics
- 4 non-verbal communication

**QUESTION 23**

Which one of the following statements regarding **body language** is **INCORRECT**?

- 1 In Spain people maintain a big personal space and stand far from each other when talking
- 2 Nonverbal signals complement spoken messages and can contradict such messages
- 3 Nonverbal signals are not universally the same and therefore one cannot make generalisations about body language applicable to all societies
- 4 It is said that at least 90% of emotional information is transmitted by body language and tone of voice

**QUESTION 24**

Which of the following statements regarding **human agency** is/are **CORRECT**?

- a Individual action or initiative always plays a role in environmental changes, whether physical or sociocultural
- b Revitalisation movements do not constitute an example of human agency in action
- c Individuals perceive, interpret and manipulate the rules of the system to meet their own interests
- d An example of human agency is an influential leader who mobilises a community to change their circumstances by action

Select the **CORRECT** combination

- 1 b
- 2 a and b
- 3 c and d
- 4 a, c and d

**QUESTION 25**

Which one of the following **best** explains the anthropological concept of **culture**?

- 1 A society's system of thought, behaviour, values and material creations that come into being through close interaction with the natural environment
- 2 The transmission of the accumulated knowledge, rules of behaviour and values of a society from one generation to the next
- 3 Phenomena such as opera, sculpture, writing and other creative achievements associated with civilisations
- 4 Political, economic and religious processes related to the rich variety of forms of society across the world

**QUESTION 26**

Which one of the following statements regarding the characteristics of culture is **CORRECT**?

- 1 For a thought, action or belief to be regarded as cultural, it must be shared by all the members in a group
- 2 Culture comprise actual human behaviour like speech and food production, and not the underlying ideas resulting in such behaviour
- 3 Not all sociocultural systems change and therefore one cannot without qualification state that culture is dynamic
- 4 The various systems of culture do not function in isolation but are interdependent

[TURN OVER]

**QUESTION 27**

Select the option that **CORRECTLY** completes the following statement

Humans are set apart from animals on the basis that they, in contrast to animals,

- 1 use tools to adapt to their environment
- 2 have the ability to communicate symbolically
- 3 must be taught how to behave
- 4 share their behaviour with members of their group

**QUESTION 28**

Indicate the option that **CORRECTLY** completes the following statement

The main process by means of which **enculturation** of the Karretjie-children takes place is

- 1 formal education in government schools
- 2 observation and imitation of family members
- 3 communication with a wide variety of people while they are itinerant
- 4 socialisation with other Karretjie-children

**QUESTION 29**

Which of the following is/are raised by Eriksen as (an) objection(s) to use of the concept of culture in contemporary society?

The concept of culture should no longer be used in anthropology because

- 1 the use of the plural, cultures, divides human beings in that it emphasises differences between groups of people
- 2 it has been used to discriminate against others and to justify exclusion by means of aggressive nationalism
- 3 now that differences between people are no longer legislated in the world, it has become obsolete
- 4 people at grassroots-level reject it on account of its use as a social engineering tool
- 5 1 and 2

**QUESTION 30**

Select the option that **CORRECTLY** completes the following statement

All of the following are true for **social and group identity**, **EXCEPT** that

- 1 anthropologists emphasise social identity at the expense of gender identity
- 2 groups create their identity through performance, art and material culture
- 3 'imagined communities' include large scientific or professional groups
- 4 Facebook is used to explore group identities without the constraints of 'real life' boundaries

**QUESTION 31**

Beliefs, values, behaviours and expectations which are shared link people together in groups. Match the human groups listed in **Column A** to the corresponding description in **Column B** and then select the **CORRECT** option

<b>COLUMN A</b>	<b>COLUMN B</b>
a Society	i An organised group that is localised, self-perpetuating, has easily identifiable boundaries and who act together for their wellbeing and survival
b Community	ii A way of referring to a group which shares a distinctive set of standards and behaviour patterns by which the group functions, while still sharing some common practices with the larger groupings from which they stem
c Ethnic group	iii A construct of anthropologists to describe an organised group of interdependent people who generally share a common territory and language, and who act together for their wellbeing and survival
d A subculture	iv People who collectively and explicitly identify themselves as a distinct group based on various sociocultural features, such as customs and beliefs

Select the **CORRECT** combination

- 1 a-i, b-ii, c-iv, d-iii
- 2 a-iii, b-i, c-ii, d-iv
- 3 a-ii, b-iv, c-i, d-iii
- 4 a-iii, b-i, c-iv, d-ii

**QUESTION 32**

Which one of the following statements regarding **the construction of individual and/or group identities** is **CORRECT**?

- 1 Identity is not a static category but a continuous process and more accurately could be called identification
- 2 'Politics of identity' refers to a process through which a government attempts to mould ethnic identities into relatively fixed frames so that they can act politically
- 3 'Identity politics' refers to a process in which ethnic and racial identities contest the structures of power that constrain them
- 4 The construction of gender identity universally is based on genital anatomy.

**QUESTION 33**

Read the paragraph and then select the option that **CORRECTLY** completes the statement that follows

*Some time ago, 2000 Zimbabweans were driven out of an informal settlement near De Doorns in the Western Cape by local residents. The Zimbabweans' houses were also broken down and they were regarded as 'incomers' – people who come from outside, foreigners*

These perceptions and actions can best be typified as exemplifying

- 1 ethnocentrism
- 2 xenophobia
- 3 discrimination
- 4 racism

[TURN OVER]

**QUESTION 34**

Which one of the following **BEST** describes the alliance theory of exogamy?

One must marry someone from

- 1 a hostile neighbouring group to temper the hostile relations between the groups
- 2 outside one's descent group to facilitate social cohesion within a community
- 3 outside one's descent group to strengthen the power basis of the ruling group in a community
- 4 outside one's descent group to prevent competition for available partners which will disrupt the internal solidarity of a group

**QUESTION 35**

Which of the following, regarding **marriage among Xhosa-speaking societies and clan membership** in general, is **CORRECT**?

- 1 Excepting for the father's and the mother's clans, a person in Xhosa society may marry someone belonging to any other clan
- 2 In patrilineal societies a woman retains her clan name after marriage but does not pass it on to her children
- 3 In matrilineal societies a man loses his clan membership after marriage and can therefore not pass it on to his children
- 4 Among Xhosa-speakers, children born from a marriage inherit the clan names of both their father and mother

**QUESTION 36**

First decide whether Statements A, B and C, which relate to the choice of marriage partners and the conclusion of marriage among Sotho-speaking groups, are **CORRECT** or **INCORRECT** and then select the **CORRECT** option from those given below

**Statement A**

The conclusion of marriage comprises a series of legal, ritual and ceremonial acts

**Statement B**

People who practise cross-cousin marriage believe it strengthens relations between kin-groups

**Statement C**

The transfer of marriage goods gives security to the bride after the conclusion of a marriage

- 1 Only Statements A and B are correct
- 2 Only Statements A and C are correct
- 3 Only Statement A is correct
- 4 Only Statement B is correct
- 5 Statements A, B and C are correct

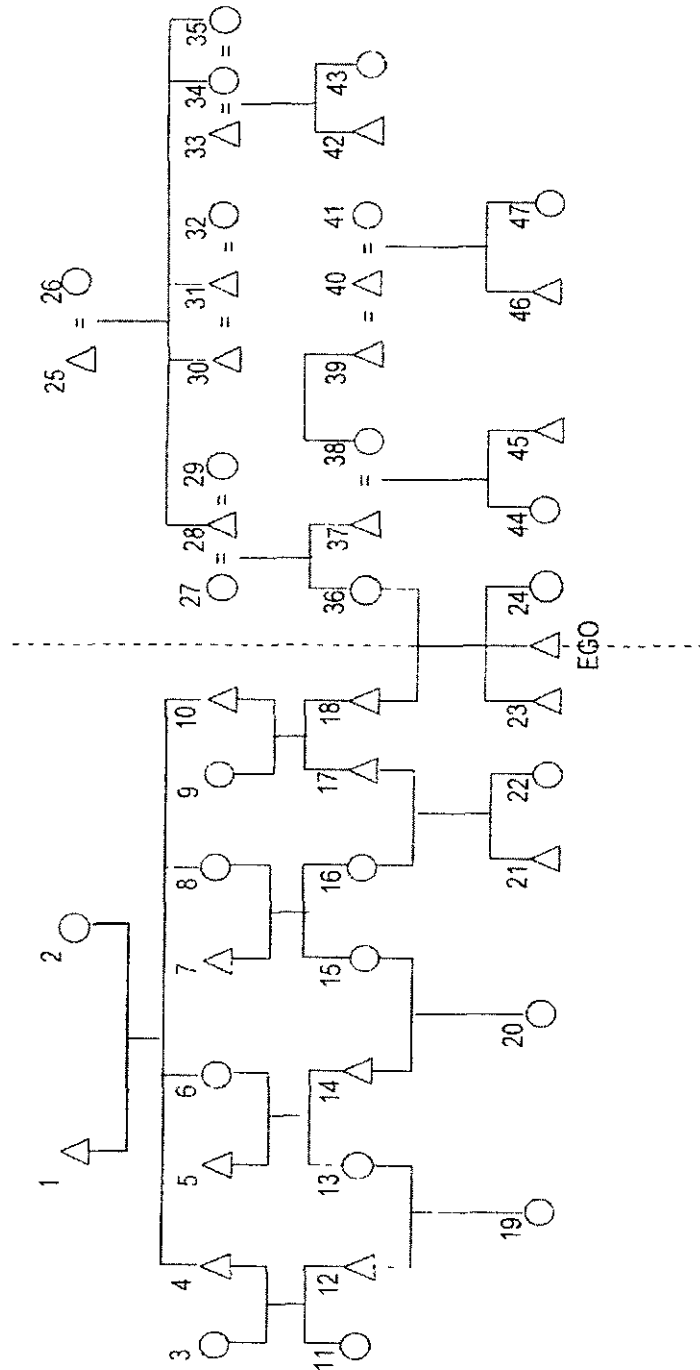
**QUESTION 37**

Select the option that **CORRECTLY** completes the following statement

In South Africa clans among Nguni-speakers are usually

- 1 localised groups
- 2 corporate groups
- 3 exogamous groups.
- 4 matrilineal groups.

ANSWER QUESTIONS 38 TO 45 WITH REFERENCE TO THE FOLLOWING DIAGRAM.



**QUESTION 38**

Through which of the following persons would EGO trace his descent in a **double descent system**?

- 1 27, 28, 29 and 36
- 2 1 and 2, 9 and 10, 18 and 36
- 3 9, 10 and 18 as well as 27, 28 and 36
- 4 1, 10 and 18 as well as 27 and 36

**QUESTION 39**

Whom of the following relatives are indicated **CORRECTLY**?

- 1 Parallel cousins 22 and 24
- 2 Patrilineal kin 11 and 13
- 3 Cross cousins 21 and 44
- 4 Affines 38 and 44

**QUESTION 40**

Which marriage in the diagram is an example of **sororal polygyny**? The marriage between

- 1 30, 31 and 32
- 2 39, 40 and 41
- 3 33, 34 and 35
- 4 27, 28 and 29

**QUESTION 41**

Select the option that **CORRECTLY** completes the following statement

If 6, 12 and 17 belongs to the same descent group as 4, 8, 19 and Ego, their system of descent reckoning is

- 1 cognatic
- 2 double
- 3 patrilineal
- 4 matrilineal
- 5 parallel

**QUESTION 42**

Who is the **apical ancestor of the patrilineage** to which 22 belongs?

- 1 10
- 2 1
- 3 7
- 4 2

**QUESTION 43**

Which of the following indicates the **relationship of 7 and 13 CORRECTLY**?

- 1 FaBrWi
- 2 MoSiHu
- 3 FaSiDa
- 4 MoBrWi

**QUESTION 44**

Which of the following represents a **cross-cousin marriage**? The union between

- 1 31 and 32
- 2 16 and 17
- 3 37 and 38
- 4 14 and 15

**QUESTION 45**

Who would exercise authority over **44** and **45** if they are members of a group with a **matrilineal descent system**?

- 1 25
- 2 37
- 3 27
- 4 39

**QUESTION 46**

Select the option that **CORRECTLY** completes the following statement

Among indigenous societies in South Africa, the transfer of marriage goods

- a gives the groom and his descent group the right to marry the bride and the right to any children born of the marriage
- b essentially constitutes an economic transition because it transfers ownership of the wife to the groom and his descent group
- c occurs after agreement has been reached on the amount of the goods in consideration of the beauty, age, virginity and level of education of the bride
- d is compulsory and may take the form of money, food, agricultural implements and livestock

Select the **CORRECT** combination

- 1 a and b
- 2 b and c
- 3 a, c and d
- 4 a, b, c and d

**QUESTION 47**

Select the option that **CORRECTLY** completes the following statement

Anthropologists study **religion** in order to

- 1 rank religions according to a developmental scale from inferiority to superiority
- 2 obtain factual knowledge of the supernatural
- 3 distinguish between false and true religions
- 4 understand a religious system in terms of its meaning for its followers

**QUESTION 48**

Select the option that **CORRECTLY** completes the following statement

**Religion and magic** are distinguished as analytical concepts on the basis that

- 1 religion is associated with personal supernatural beings, whereas magic is associated with impersonal powers
- 2 religion is associated with the intention to manipulate, whereas magic is associated with an attitude of dependence
- 3 religion is found universally, whereas magic is confined to non-western societies
- 4 religion creates social cohesion, whereas magic advances social disintegration

**QUESTION 49**

Which one of the following concepts represents the idea of the **active involvement of the deity or deities** in the everyday affairs of humans?

- 1 Polytheism
- 2 Monotheism
- 3 Deism
- 4 Atheism
- 5 Theism

**QUESTION 50**

Which one of the following is believed to become the **temporary abode of supernatural powers or spirits**? A(n)

- 1 fetish
- 2 amulet
- 3 talisman
- 4 familiar

**QUESTION 51**

Which one of the following is an impersonal power that works in living beings as well as non-living objects?

- 1 *Umlaza*
- 2 *Mana*
- 3 *Pancankam*
- 4 *Malopo*

**QUESTION 52**

Select the option that **CORRECTLY** completes the following statement

Communities who practise ancestor cults generally believe that ancestors

- 1 denote deceased people who live in the world of the ancestors
- 2 have unlimited knowledge of the living
- 3 can influence their living close kin as well as non-kin
- 4 do not usually send misfortune and ill-health to their close kin

**QUESTION 53**

Select the option that **CORRECTLY** completes the following statement

In anthropological theory the concept of **myth** is used to refer to

- 1 tales of fictitious events based on irrational ideas
- 2 a primitive form of scientific thinking
- 3 tales of cosmic origins and their meanings
- 4 oral tradition of verifiable historical events

**QUESTION 54**

Which one of the following ritual leaders provides knowledge of the supernatural by using standardised procedures to interpret evidence found in various signs?

- 1 Priest
- 2 Prophet
- 3 Herbalist
- 4 Diviner

**QUESTION 55**

Which one of the following statements regarding the **supernatural** is **CORRECT**?

- 1 In South Africa, the idea that illness results from supernatural forces is found only among indigenous communities
- 2 In many languages there is no equivalent for the English term 'supernatural', which indicates that the supernatural does not exist for speakers of such languages
- 3 In terms of a 'western worldview' no clear distinction is made between humans, nature and the supernatural
- 4 In communities around the world, perceptions of the supernatural change over time

**QUESTION 56**

Which one of the following is an important characteristic of the *malopo-cult*?

- 1 The focal point in the treatment of a sick medium is the application of a divination method called *ukuvumisa*
- 2 The cult empowers women and focuses on the needs of female members
- 3 Cult members enjoy a higher status than traditional diviners in society
- 4 Men still take the final decisions in ritual affairs

**QUESTION 57**

Select the option that **CORRECTLY** completes the following statement

According to the Gcaleka of the Eastern Cape, ritual impurity ensues when a

- 1 woman enters the cattle kraal
- 2 menstruating woman touches a pig
- 3 person touches fatty meat
- 4 man enters the female side of the domestic dwelling

**QUESTION 58**

Select the option that **CORRECTLY** completes the following statement

Among the Northern Sotho, the **malopo-cult** is closely associated with

- 1 the ancestor spirits
- 2 the Supreme Being
- 3 punishment for wrongs
- 4 myths about their origin
- 5 sorcery

**QUESTION 59**

First decide whether Statements A, B and C which relate to **the meaning of rituals** are **CORRECT** or **INCORRECT** and then select the **CORRECT** option from those given below

**Statement A**

Rituals contain symbolic elements

**Statement B**

Water is associated with coolness and purification

**Statement C**

The purpose of rituals may be the establishment, maintenance or restoration of relations with the supernatural

- 1 Only Statements A and B are correct
- 2 Only Statements A and C are correct
- 3 Only Statement A is correct
- 4 Only Statement B is correct
- 5 Statements A, B and C are correct

**QUESTION 60**

Select the option that **CORRECTLY** completes the following statement

Religious fundamentalism

- 1 is regarded as a contemporary form of modernism
- 2 is represented in the dramatic growth of evangelical denominations in the United States
- 3 rejects the contemporary divide between a sacred view of life and the secular world
- 4 essentially rejects science, but welcomes the use of modern technology

**TOTAL: [60]**

**PART 1 (GENERAL/ALGEMEEN) DEEL 1**

STUDY UNIT e.g. PSY100-X  
STUDIE-EENHEID by PSY100-X

INITIALS AND SURNAME  
VOORLETTERS EN VAN

1

3

PAPER NUMBER  
VRAESTELNOMMER

DATE OF EXAMINATION  
DATUM VAN EKSAMEN

2

EXAMINATION CENTRE (E.G. PRETORIA)  
EKSAMENSENTRUM (BY PRETORIA)

STUDENT NUMBER  
STUDENTENOMMER

UNIQUE PAPER NO.  
UNIEKE VRAESTEL NR.

6

8

7

9

For use by examination invigilator  
Vir gebruik deur eksamenopsiener

**IMPORTANT**

- 1 USE ONLY AN HB PENCIL TO COMPLETE THIS SHEET
- 2 MARK LIKE THIS
- 3 CHECK THAT YOUR INITIALS AND SURNAME HAS BEEN FILLED IN CORRECTLY
- 4 ENTER YOUR STUDENT NUMBER FROM LEFT TO RIGHT
- 5 CHECK THAT YOUR STUDENT NUMBER HAS BEEN FILLED IN CORRECTLY
- 6 CHECK THAT THE UNIQUE NUMBER HAS BEEN FILLED IN CORRECTLY
- 7 CHECK THAT ONLY ONE ANSWER PER QUESTION HAS BEEN MARKED
- 8 DO NOT FOLD

**BELANGRIK**

- 1 GEBRUIK SLEGS 'N HB-POTLOOD OM HIERDIE BLAD TE VOLTOOI
- 2 MERK AS VOLG
- 3 KONTROLEER DAT U VOORLETTERS EN VAN REG INGEVUL IS
- 4 VUL U STUDENTENOMMER VAN LINKS NA REGS IN
- 5 KONTROLEER DAT U DIE KORREKTE STUDENTENOMMER VERSTREK HET
- 6 KONTROLEER DAT DIE UNIEKE NOMMER REG INGEVUL IS
- 7 MAAK SEKER DAT NET EEN ALTERNATIEF PER VRAAG GEMERK IS
- 8 MOENIE VOU NIE

**PART 2 (ANSWERS/ANTWOORDE) DEEL 2**

10

1 c1) c2) c3) c4) c5)  
2 c1) c2) c3) c4) c5)  
3 c1) c2) c3) c4) c5)  
4 c1) c2) c3) c4) c5)  
5 c1) c2) c3) c4) c5)  
6 c1) c2) c3) c4) c5)  
7 c1) c2) c3) c4) c5)  
8 c1) c2) c3) c4) c5)  
9 c1) c2) c3) c4) c5)  
10 c1) c2) c3) c4) c5)  
11 c1) c2) c3) c4) c5)  
12 c1) c2) c3) c4) c5)  
13 c1) c2) c3) c4) c5)  
14 c1) c2) c3) c4) c5)  
15 c1) c2) c3) c4) c5)  
16 c1) c2) c3) c4) c5)  
17 c1) c2) c3) c4) c5)  
18 c1) c2) c3) c4) c5)  
19 c1) c2) c3) c4) c5)  
20 c1) c2) c3) c4) c5)  
21 c1) c2) c3) c4) c5)  
22 c1) c2) c3) c4) c5)  
23 c1) c2) c3) c4) c5)  
24 c1) c2) c3) c4) c5)  
25 c1) c2) c3) c4) c5)  
26 c1) c2) c3) c4) c5)  
27 c1) c2) c3) c4) c5)  
28 c1) c2) c3) c4) c5)  
29 c1) c2) c3) c4) c5)  
30 c1) c2) c3) c4) c5)  
31 c1) c2) c3) c4) c5)  
32 c1) c2) c3) c4) c5)  
33 c1) c2) c3) c4) c5)  
34 c1) c2) c3) c4) c5)  
35 c1) c2) c3) c4) c5)

36 c1) c2) c3) c4) c5)  
37 c1) c2) c3) c4) c5)  
38 c1) c2) c3) c4) c5)  
39 c1) c2) c3) c4) c5)  
40 c1) c2) c3) c4) c5)  
41 c1) c2) c3) c4) c5)  
42 c1) c2) c3) c4) c5)  
43 c1) c2) c3) c4) c5)  
44 c1) c2) c3) c4) c5)  
45 c1) c2) c3) c4) c5)  
46 c1) c2) c3) c4) c5)  
47 c1) c2) c3) c4) c5)  
48 c1) c2) c3) c4) c5)  
49 c1) c2) c3) c4) c5)  
50 c1) c2) c3) c4) c5)  
51 c1) c2) c3) c4) c5)  
52 c1) c2) c3) c4) c5)  
53 c1) c2) c3) c4) c5)  
54 c1) c2) c3) c4) c5)  
55 c1) c2) c3) c4) c5)  
56 c1) c2) c3) c4) c5)  
57 c1) c2) c3) c4) c5)  
58 c1) c2) c3) c4) c5)  
59 c1) c2) c3) c4) c5)  
60 c1) c2) c3) c4) c5)  
61 c1) c2) c3) c4) c5)  
62 c1) c2) c3) c4) c5)  
63 c1) c2) c3) c4) c5)  
64 c1) c2) c3) c4) c5)  
65 c1) c2) c3) c4) c5)  
66 c1) c2) c3) c4) c5)  
67 c1) c2) c3) c4) c5)  
68 c1) c2) c3) c4) c5)  
69 c1) c2) c3) c4) c5)  
70 c1) c2) c3) c4) c5)

71 c1) c2) c3) c4) c5)  
72 c1) c2) c3) c4) c5)  
73 c1) c2) c3) c4) c5)  
74 c1) c2) c3) c4) c5)  
75 c1) c2) c3) c4) c5)  
76 c1) c2) c3) c4) c5)  
77 c1) c2) c3) c4) c5)  
78 c1) c2) c3) c4) c5)  
79 c1) c2) c3) c4) c5)  
80 c1) c2) c3) c4) c5)  
81 c1) c2) c3) c4) c5)  
82 c1) c2) c3) c4) c5)  
83 c1) c2) c3) c4) c5)  
84 c1) c2) c3) c4) c5)  
85 c1) c2) c3) c4) c5)  
86 c1) c2) c3) c4) c5)  
87 c1) c2) c3) c4) c5)  
88 c1) c2) c3) c4) c5)  
89 c1) c2) c3) c4) c5)  
90 c1) c2) c3) c4) c5)  
91 c1) c2) c3) c4) c5)  
92 c1) c2) c3) c4) c5)  
93 c1) c2) c3) c4) c5)  
94 c1) c2) c3) c4) c5)  
95 c1) c2) c3) c4) c5)  
96 c1) c2) c3) c4) c5)  
97 c1) c2) c3) c4) c5)  
98 c1) c2) c3) c4) c5)  
99 c1) c2) c3) c4) c5)  
100 c1) c2) c3) c4) c5)  
101 c1) c2) c3) c4) c5)  
102 c1) c2) c3) c4) c5)  
103 c1) c2) c3) c4) c5)  
104 c1) c2) c3) c4) c5)  
105 c1) c2) c3) c4) c5)

106 c1) c2) c3) c4) c5)  
107 c1) c2) c3) c4) c5)  
108 c1) c2) c3) c4) c5)  
109 c1) c2) c3) c4) c5)  
110 c1) c2) c3) c4) c5)  
111 c1) c2) c3) c4) c5)  
112 c1) c2) c3) c4) c5)  
113 c1) c2) c3) c4) c5)  
114 c1) c2) c3) c4) c5)  
115 c1) c2) c3) c4) c5)  
116 c1) c2) c3) c4) c5)  
117 c1) c2) c3) c4) c5)  
118 c1) c2) c3) c4) c5)  
119 c1) c2) c3) c4) c5)  
120 c1) c2) c3) c4) c5)  
121 c1) c2) c3) c4) c5)  
122 c1) c2) c3) c4) c5)  
123 c1) c2) c3) c4) c5)  
124 c1) c2) c3) c4) c5)  
125 c1) c2) c3) c4) c5)  
126 c1) c2) c3) c4) c5)  
127 c1) c2) c3) c4) c5)  
128 c1) c2) c3) c4) c5)  
129 c1) c2) c3) c4) c5)  
130 c1) c2) c3) c4) c5)  
131 c1) c2) c3) c4) c5)  
132 c1) c2) c3) c4) c5)  
133 c1) c2) c3) c4) c5)  
134 c1) c2) c3) c4) c5)  
135 c1) c2) c3) c4) c5)  
136 c1) c2) c3) c4) c5)  
137 c1) c2) c3) c4) c5)  
138 c1) c2) c3) c4) c5)  
139 c1) c2) c3) c4) c5)  
140 c1) c2) c3) c4) c5)

Specimen only