

**APY1501**

( 498943) October/November 2015

**THE ANTHROPOLOGICAL STUDY OF CULTURE IN A MULTICULTURAL  
CONTEXT**

Duration 2 Hours

60 Marks

**EXAMINERS**

FIRST

SECOND

MR JS VAN WYK

MS JMF WOUTERS

---

Closed book examination

This examination question paper remains the property of the University of South Africa and may not be removed from the examination venue

This paper consists of **18** pages **PLUS** instructions for the completion of a mark reading sheet

**PLEASE COMPLETE THE ATTENDANCE REGISTER ON THE BACK PAGE, TEAR OFF AND  
HAND TO THE INVIGILATOR**

- 1 Answer **ALL** the questions **FILL IN YOUR ANSWERS ON THE MARK READING SHEET**
- 2 **ONLY ONE** option per multiple choice questions must be selected **NO MARKS** will be given if more than one option is included in an answer
- 3 All multiple choice questions count **ONE MARK PER QUESTION**

**QUESTION 1**

Which of the following **best** describes anthropology as a comprehensive discipline?

- 1 A study of human cultural diversity worldwide
- 2 A study of human biological diversity worldwide
- 3 A scientific study of human diversity worldwide and throughout time
- 4 A study of human diversity worldwide and throughout time

**QUESTION 2**

Choose the **INCORRECT** statement

Linguistic anthropologists

- 1 initially studied the historical development of unwritten languages of non-western societies
- 2 study societies to gain an understanding of how cultural phenomena are expressed verbally
- 3 mainly focus attention on the evolution of languages in prehistorical societies
- 4 study the way in which language is used in different social contexts

**QUESTION 3**

Indicate the option that **CORRECTLY** completes the following statement

An important difference between anthropology and other human sciences is that anthropology

- 1 is mainly concerned with the study of nonindustrial societies
- 2 is specifically interested in the social relations, organisation and behaviour of human societies
- 3 studies human societies of prehistoric as well as historic times
- 4 is concerned with the totality of human existence

**QUESTION 4**

Which anthropological subfield focuses on the material culture of past societies?

- 1 Physical anthropology
- 2 Archaeology
- 3 Linguistics
- 4 Sociocultural anthropology

**QUESTION 5**

From the options below, select the term that **CORRECTLY** completes the following statement

The term \_\_\_\_\_ refers to both the process and the product of fieldwork

- 1 etic description
- 2 enculturation
- 3 ethnography
- 4 ethnocentrism

**QUESTION 6**

From the options below, select the concept that **CORRECTLY** completes the following statement

An anthropological concern with the relationship between power and the reconstruction of knowledge gave rise to the . approach

- 1 holistic
- 2 cross-cultural comparative
- 3 ethnocentric
- 4 reflexive

**QUESTION 7**

Indicate the option that **CORRECTLY** completes the following statement

Anthropological information that has been collected by means of the ethnographic method will be regarded as a more **meaningful** and **accurate** representation of peoples' sociocultural systems when an anthropologist has

- 1 representative statistical surveys that verify the information
- 2 made systematic and relevant cross-cultural comparisons of the information
- 3 interviewed a number of research participants and has participated in relevant cultural activities
- 4 applied the emic and etic research approaches during his/her fieldwork

**QUESTION 8**

Indicate the option that **CORRECTLY** completes the following statement

In terms of the **holistic approach** to the study of human beings, anthropologists are required to

- 1 take the whole context of a particular human group into account
- 2 construct an overall picture of the development of culture
- 3 obtain a balanced view of the life of a society
- 4 draw generalisations about the entire human condition

**QUESTION 9**

Which one of the options **best** illustrates an **etic approach** to the study of the Karretjie People?

1. A researcher receiving the credit for publications on the Karretjie People without giving credit to his/her research participants' intellectual property
- 2 A researcher publishing information on the subjective experiences of the Karretjie People, using only their own words and phrases
- 3 A researcher presenting stereotypes of the Karretjie People as the truth, such as that they are all sly and shifty
- 4 A researcher presenting only his/her own interpretation of the information obtained from the Karretjie People

**QUESTION 10**

Indicate the option that **CORRECTLY** completes the following statement

**Participant observation** means that an anthropologist should

- 1 participate in the sense that he/she should commit his/her thoughts and emotions to the real-world fieldwork setting, and record his/her observations in an objective, scientific and systematic manner
- 2 become an active participant in the daily life of the community concerned and report on his/her experiences from his/her own cultural perspective
- 3 be a careful observer of the customs and daily life of a community to enable him/her to understand and record the relevant activities and events
- 4 observe more than participate in a conscious attempt to obtain concise, objective answers to specific research questions to enable anthropological theorisation

**QUESTION 11**

Which one of the following combinations pertaining to anthropological method and explanation has been linked **CORRECTLY**?

1	Social network analysis	Tracing of kinship relationships to reconstruct a family tree
2	Genealogical method	Tracing of friendship relationships within a community
3	In-depth interviewing	Gathering of information mainly through quantitative strategies
4	Participant observation	Immersion of the researcher in the daily lives of the people being studied

**QUESTION 12**

Indicate the option that **CORRECTLY** completes the following statement

If an excessively **cultural relativistic** approach is followed in anthropology

- 1 cultural practices that have a harmful impact on a society may not be questioned
- 2 the researcher might adopt an ethnocentric approach to the study of people
- 3 statistical data relevant to an investigation might be misinterpreted
- 4 the researcher's beliefs may influence the result of his/her investigation

**QUESTION 13**

Indicate the option that **CORRECTLY** completes the following statement

When an anthropologist first arrives in the field to conduct fieldwork, he or she may experience **culture shock**. Culture shock can be defined as

- 1 the differences and misunderstandings resulting from contact between people with different sociocultural backgrounds
- 2 a feeling of disorientation and anxiety resulting from being in an unfamiliar environment and among unfamiliar people
- 3 feelings of inferiority resulting from the rejection of the anthropologist as researcher by the research community concerned
- 4 the stress resulting from being subjected to rapid sociocultural change

**QUESTION 14**

Today anthropologists do fieldwork among

- 1 hunters and gatherers
- 2 people in a complex urban neighbourhood
- 3 people who are employed in an international corporation
- 4 1 and 2
- 5 1, 2 and 3

**QUESTION 15**

Indicate the option that **CORRECTLY** completes the following statement

The hominid line includes

- a australopithecines
- b tarsiers
- c *Homo habilis*
- d *Homo sapiens*
- e lemurs

Choose the **correct** combination

- 1 b, c, d and e
- 2 c and d
- 3 a, b, c, d and e
- 4 a, c and d
- 5 a, b and e

**QUESTION 16**

Which one of the following combinations of **human classification** and **characteristics** is **CORRECT**?

1 Hominids	Dwellings made of piled stone or bushes, a highly developed toolkit and, possibly, the use of fire
2 Hominoids	Upright posture which sets the hands free to carry things and manipulate the environment
3 <i>Homo erectus</i>	Developed a remarkable toolkit of fine projectile points and hunted big-game animals by hurling spears
4. <i>Homo sapiens</i>	Developed speech and language, marriage and the family

**QUESTION 17**

Indicate the option that **CORRECTLY** completes the following statement

Humans belong to the **genus** and the **species**

- 1 *Homo - sapiens sapiens*
- 2 *Homininae - homo sapiens sapiens*
- 3 *Hominidae - homo*
- 4 *Homo sapiens sapiens – Hominoidea*

**QUESTION 18**

Which one of the statements regarding body language is **INCORRECT**?

Body language

- 1 is not about what is said, but how it is said
- 2 conveys at least 90% of the meaning of verbal communication
- 3 makes full understanding of verbal messages possible
- 4 differs across different sociocultural systems

**QUESTION 19**

Which of the statements regarding **anthropology and gender** is/are **CORRECT**?

- a Anthropology focuses on how ideas about gender are constructed in different sociocultural contexts
- b Gender differences are located in the physical body, therefore anthropology does not distinguish between sexed bodies and socially constructed genders
- c Individuals' gender construction is viewed as occurring separately from the influence of the group's perceptions of gender
- d Gender identity is acquired through socialisation and enculturation, but is also shaped by a person's lived experiences

Choose the **correct** option

- 1 d
- 2 a and d
- 3 b and d
- 4 a and c

**QUESTION 20**

Indicate the option that **CORRECTLY** completes the following statement

**Female genital mutilation is...**

- a often enforced by older women in the community
- b still practised in 28 African countries
- c a measure to inhibit female sexuality
- d most common among African Muslims

Choose the **correct** combination

- 1 a and d
- 2 a, b, c and d
- 3 b and c
- 4 b, c and d

**QUESTION 21**

Which of the following statements regarding gender identity is **CORRECT** according to Henrietta Moore (1994)?

- 1 Gender identity is a passive identity acquired through enculturation or socialisation in a specific community
- 2 Humans are aware of both the unconscious and social determinants of gender identity
- 3 Gender identity has both individual and collective dimensions
- 4 The female and male, as flesh and bone, are the most important features of gender identity

**QUESTION 22**

Which of the following statements regarding **images and perceptions of the body** is **CORRECT**?

- 1 Tattooing is used universally to signify status and prestige
- 2 The increasing objectification of male bodies is indicative of a shift in the sociocultural ideal of beauty from women to men
- 3 Human bodies are fashioned by sociocultural systems and contexts
- 4 Circumcision is universally performed as a ritual which symbolically transforms boys into men

**QUESTION 23**

Which of the following statements regarding **social and group identity** are **CORRECT**?

- a Humans create social and group identities by means of performance, art, material culture and ritual
- b A group's identity is not defined in comparison to other groups
- c A community or society may contain sub-cultural groups with their own distinct identities
- d An 'imagined community's' identity is absorbed in the identity of the larger society of which it forms part

Choose the **correct** combination

- 1 a and c
- 2 a, b and d
- 3 a, c and d
- 4 b, c and d

**QUESTION 24**

Choose the **INCORRECT** statement

Xenophobia

- 1 may occur when ethnicity assumes a racial dimension
- 2 occurs when an ethnic group discriminates against or violently confronts another ethnic group
- 3 may be instigated by actual or perceived biological, physical or sociocultural differences between ethnic groups
- 4 occurs mainly in ethnically homogeneous societies

**QUESTION 25**

Indicate the option that **CORRECTLY** completes the following statement

Culture is **learned**. This characteristic of culture means that

- 1 people acquire their culture by growing up in and with it
- 2 culture is biologically inherited
- 3 cultural aspects are linked to form integrated systems
- 4 symbols enable people to communicate by means of language

**QUESTION 26**

Indicate the option that **CORRECTLY** completes the following statement

Despite being 'traditionally' itinerant, in recent years many of the **Karretjie People** of the Great Karoo have adapted to alternative lifestyles such as settling on the fringes of towns. Such an adaptation illustrates one of the **characteristics of culture**, namely that culture is

- 1 learned
- 2 shared
- 3 dynamic
- 4 symbolic

**QUESTION 27**

Indicate the option that **CORRECTLY** completes the following statement

For behaviour to be regarded as '**cultural**', it must be

- 1 characteristic of only one social group
- 2 considered to be appropriate by a significant number of people in a group
- 3 practised by every single person in a group
- 4 learned from family and friends

**QUESTION 28**

Which one of the statements regarding **ethnicity** is **CORRECT**?

**Ethnicity**

- 1 may be based on perceived sociocultural differences between social groups
- 2 impedes culture change because of an emphasis on ancient symbols and practices
- 3 moulds people always into collective identities for the purpose of undertaking political action
- 4 is not defined in terms of the physical characteristics of the members of a social group

**QUESTION 29**

Which of the statements regarding sociocultural change are **CORRECT**?

- a Sociocultural continuity is as much a characteristic of culture as sociocultural change
- b To a lesser or greater extent, culture changes all the time
- c Sociocultural change can occur suddenly, dramatically, or gradually
- d Sociocultural change is often precipitated by external contact or influences

Choose the **correct** combination

- 1 a and c
- 2 b and d
- 3 b, c and d
- 4 a, b, c and d

**QUESTION 30**

Indicate the option that **CORRECTLY** completes the following statement

The main process by means of which **enculturation** of the Karretjie-children takes place is

- 1 formal education in government schools
- 2 observation and imitation of family members
- 3 communication with a wide variety of people while they are itinerant
- 4 socialisation with other Karretjie-children

**QUESTION 31**

Which of the following statements regarding the construction of **individual and group identities** is **CORRECT**?

- 1 Identity is not a static category but a continuous process and more accurately could be called identification
- 2 "Politics of identity" refers to a process through which a government attempts to mould ethnic identities into relatively fixed frames so that they can act politically
- 3 "Identity politics" refer to a process in which ethnic and racial identities contest the structure of power that constrain them
- 4 The construction of gender identity universally is based on genital anatomy

**QUESTION 32**

Choose the **CORRECT** option

Anthropologists agree that the concept of **race**...

- 1 comprises a human population differing geographically from other humans
- 2 comprises a human population within which the genetic variation is less than the genetic variation between the population and other human populations
- 3 cannot be defined biologically and regard perceptions of race as sociocultural constructions
- 4 explains the innate behavioural characteristics which are attributed to various human populations

**QUESTION 33**

Indicate the option that **CORRECTLY** completes the following statement

Among **traditional Pedi**, a **future marriage...**

- 1 is initiated by the girl's parents while the future marriage partners are still children
- 2 may be nullified should the boy make a different choice before the marriage is concluded
- 3 may be cancelled by either party with the consent of the other party
- 4 may be concluded after the initiation rituals of the boy and girl
- 5 3 and 4

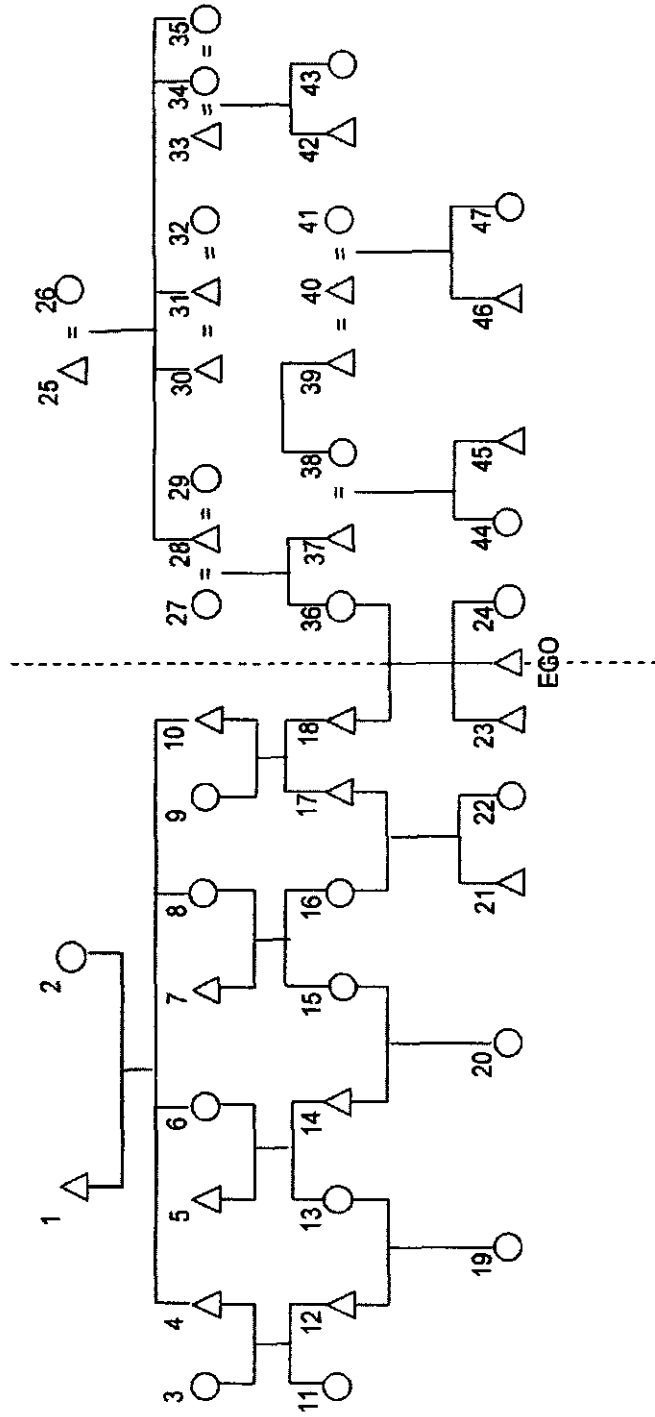
**QUESTION 34**

Indicate the option that **CORRECTLY** completes the following statement

In a **cognatic** descent system

- 1 descent is traced into deep history and is usually backed by written records
- 2 urbanisation has contributed to increased importance of nominal kin
- 3 the kin of both parents are of equal importance for descent reckoning
- 4 descent is traced separately through both male and female lines for different purposes

**ANSWER QUESTIONS 35 TO 42 WITH REFERENCE TO THE FOLLOWING DIAGRAM.**



**QUESTION 35**

Indicate the option that **CORRECTLY** completes the following statement

In a **matrilineal descent system** EGO would trace his descent through

- 1 36, 27 and 26
- 2 18, 36, 9, 10, 27 and 28
- 3 27, 29 and 36
- 4 36 and 27

**QUESTION 36**

Choose the option which indicates **38's relationship with 24 CORRECTLY**

- 1 MoFaBr
- 2 FaSiWi
- 3 FaSiHu
- 4 MoBrWi

**QUESTION 37**

Which marriage in the diagram is an example of **fraternal polyandry**? The marriage between

- 1 39, 40 and 41
- 2 27, 28 and 29
- 3 33, 34 and 35
- 4 30, 31 and 32

**QUESTION 38**

Which of the following persons belong to the same **patrilineage** as 12?

- 1 EGO, 10 and 19
- 2 21, 14 and 17
- 3 3, 8, 19 and 20
- 4 1, 8, 10 and 13

**QUESTION 39**

Who is the **apical ancestor** of the **patrilineage** to whom 21 belongs?

- 1 7
- 2 10
- 3 2
- 4 1

**QUESTION 40**

Which of the following represents a **cross-cousin marriage**? The union between

- 1 37 and 38
- 2 14 and 15
- 3 12 and 13
- 4 18 and 36

**QUESTION 41**

Through which of the following persons would EGO trace his descent in a **double descent system**?

- 1 27, 28, 29 and 36
- 2 1 and 2, 9 and 10, 18 and 36
- 3 9, 10 and 18 as well as 27, 28 and 36
- 4 1, 10 and 18 as well as 27 and 36

**QUESTION 42**

Which marriage in the diagram is an example of **sororal polygyny**? The marriage between.

- 1 30, 31 and 32
- 2 39, 40 and 41
- 3 33, 34 and 35
- 4 27, 28 and 29

**QUESTION 43**

Match the concept in Column A to the corresponding description in Column B and then select the **CORRECT** option

<b>COLUMN A</b>	<b>COLUMN B</b>
a Sororal polygyny	i A form of marriage that involves more than two marriage partners at the same time
b Fraternal polyandry	ii A marriage between a man and two sisters
c Polygamy	iii A marriage between a woman and two unrelated husbands
d Heterogeneous polyandry	iv A marriage between a woman and two brothers

- 1 a i, b ii, c iv, d iii
- 2 a iii, b iv, c ii, d i
- 3 a ii, b iv, c i, d iii
- 4 a iii, b i, c iv, d ii

**QUESTION 44**

Indicate the option that **CORRECTLY** completes the following statement

An association between two or more independent clans that results from the splitting of a clan refers to a

- 1 moiety
- 2 phratry
- 3 hierarchy of clans
- 4 corporate descent group

**QUESTION 45**

Which of the following has/have **kinship as a basis of social and other relationships** among black South African societies?

- a Formation of unilineal descent groups
- b Tracing a person's rank in a patrilineal descent system
- c Choice of employment in communities
- d Choice of residence after marriage by a newly married couple
- e Inheritance of material goods

Choose the **correct** combination

- 1 a, c, d
- 2 a, b, c, d, e
- 3 a, b, d, e
- 4 b, c, d
- 5 b, c, d, e

**QUESTION 46**

Which of the following statements regarding **clans** is/are **CORRECT**?

- a Clans are common among modern, urban societies
- b In most cases, clan members can genealogically demonstrate descent from a common ancestor
- c In some cases, the ancestor of a clan may be a mystical being
- d The Southern Ndebele also use clan names as surnames

Choose the **correct** option

- 1 d
- 2 c and d
- 3 a and b
- 4 a, b, c and d

**QUESTION 47**

Indicate the option that **CORRECTLY** completes the following statement

Heterogeneous polyandry refers to the marriage of

- 1 one woman to two brothers
- 2 one woman to two unrelated men
- 3 one man to two sisters
- 4 one man to two unrelated women

**QUESTION 48**

The main aim of the anthropological study of religion is to

- 1 obtain factual information concerning conceptions of the supernatural and of humankind's relationship with the supernatural
- 2 classify religious phenomena as either belonging to the sphere of religion or of magic
- 3 understand a religious system in terms of its meaning to its adherents
- 4 determine its interrelatedness to other aspects of the culture of a society

**QUESTION 49**

Various theories have been proposed to explain the origin of religion. Match the theorist in Column A to the corresponding theory in Column B and then select the **CORRECT** option.

COLUMN A	COLUMN B
a Edward Tylor	i Religion is born from the universal need to find comfort in time of crises
b Bronislaw Malinowski	ii Religion originates from society and serves social, rather than psychological, needs
c Sigmund Freud	iii Religion originated in people's speculation about dreams, trances and death
d Emile Durkheim	iv Religion is a form of reversal to an infantile need for security and certainty

- 1 a i, b ii, c iv, d iii
- 2 a iii, b iv, c ii, d i
- 3 a ii, b iii, c i, d iv
- 4 a iii, b i, c iv, d ii

**QUESTION 50**

Indicate the option that **CORRECTLY** completes the following statement: Religion, as distinguished from **magic**, is associated with

- 1 an impersonal power and an attitude of dependence
- 2 personalised spiritual beings and an attitude of manipulation
- 3 an impersonal power and an attitude of manipulation
- 4 personalised spiritual beings and an attitude of dependence

**QUESTION 51**

Indicate the option that **CORRECTLY** completes the following statement

**Sorcery...**

- 1 is the use of magic with evil-minded intent, even when it is used against evil-doers
- 2 is learned and not an inborn power to use magic aggressively
- 3 in all its forms, is always condemned by a community
- 4 is a ritual because it is usually sanctioned within the context of the community and sociocultural system in which it occurs

**QUESTION 52**

Indicate the option that **CORRECTLY** completes the following statement

A ritual practitioner that provides knowledge of the supernatural by means of standardised procedures to interpret evidence found in various signs is called a

- 1 prophet
- 2 diviner
- 3 traditional healer
- 4 shaman

**QUESTION 53**

Which one of the following religious systems is **NOT** a **monotheistic belief**?

- 1 Christianity
- 2 Islam
- 3 Hinduism
- 4 Judaism

**QUESTION 54**

Which one of the following statements that refer to **ideas, objects and concepts about the supernatural** is **CORRECT**?

- 1 A totem is an animal or plant that can be used by members of the totemic group for good or evil purposes
- 2 A fetish is the abode of influential ancestral spirits in some tribal groups and is kept in the homestead of the tribal leader
- 3 Amulets are objects that contain supernatural powers and ingredients through which the supernatural may be evoked
- 4 Mana is an impersonal power that is closely connected to the concept of taboo and therefore people with mana should be avoided

**QUESTION 55**

Which one of the statements regarding **religion today** is **INCORRECT**?

- 1 Some scholars maintain that scientific development has encouraged the practice of religion in modern life because it raises questions about human existence
- 2 It is estimated that more than half of Christian church members in southern Africa belong to fundamentalist churches
- 3 Globalisation, modernisation and secularisation have led to a worldwide renewed interest in religion
- 4 Among the fastest growing religious communities in the world are the indigenous churches of Africa

**QUESTION 56**

Indicate the option that **CORRECTLY** completes the following statement

**Revelation...**

- 1 is an act in which humans attempt to acquire information that is only available from the supernatural
- 2 during Christian church services occurs predominantly through prayers
- 3 does not occur during altered states of consciousness
- 4 is an act where the supernatural takes the initiative to impart knowledge to humans

**QUESTION 57**

Indicate the option that **CORRECTLY** completes the following statement Religious fundamentalism

- 1 is regarded a contemporary form of modernism
- 2 is represented in the dramatic growth of evangelical denominations in the United States
- 3 rejects the contemporary divide between a sacred view of life and the secular world
- 4 essentially rejects science, but welcomes the use of modern technology

**QUESTION 58**

Match the concept in Column A to the corresponding description in Column B and then select the **CORRECT** option

COLUMN A	COLUMN B
a Myth	i Occurs when a person is in an altered state of consciousness and receives a message from the supernatural
b Trance	ii A story of cosmic origins or events that gives meaning to humans and their world
c Vision	iii Can be induced in various ways, for example, by means of drugs or rhythmic music and dancing
d Possession	iv An extreme form of altered consciousness whereby an individual is believed to become one with a spirit

- 1 a i, b ii, c iv, d iii
- 2 a iii, b iv, c ii, d i
- 3 a ii, b iii, c i, d iv
- 4 a iii, b i, c iv, d ii

**QUESTION 59**

Indicate the option that **CORRECTLY** completes the following statement

Spirits of deceased senior traditional leaders inhabit bushes while there are other spirits who live in rivers and lakes. The large waterpool below the Phiphidi Falls is believed to be inhabited by the ancestral spirits of the Ngoni and they can be heard dancing under the water. These beliefs apply to

- 1 Venda-speakers
- 2 Zulu-speakers
- 3 Pedi-speakers
- 4 Xhosa-speakers

**QUESTION 60**

First decide whether Statements A, B and C which relate to **the meaning of rituals** are **CORRECT** or **INCORRECT** and then choose the **CORRECT** option from those given below

**Statement A**

Rituals contain a symbolic element

**Statement B**

Water is associated with coolness and purification

**Statement C**

The purpose of rituals may be the establishment, maintenance or restoration of relations with the supernatural

- 1 Only Statements A and B are correct
- 2 Only Statements A and C are correct
- 3 Only Statement A is correct
- 4 Only Statement B is correct
- 5 Statements A, B and C are correct

**TOTAL: [60]**

**PART 1 (GENERAL/ALGEMEEN) DEEL 1**

STUDY UNIT e.g. PSY101-X  
 STUDIE EENHEID by PSY101-X

--	--	--	--	--	--

PAPER NUMBER  
 VRAESTELNOMMER

--	--	--	--	--

STUDENT NUMBER  
 STUDENTENOMMER

01	02	03	04	05	06	07	08	09	10
11	12	13	14	15	16	17	18	19	20
21	22	23	24	25	26	27	28	29	30
31	32	33	34	35	36	37	38	39	40
41	42	43	44	45	46	47	48	49	50
51	52	53	54	55	56	57	58	59	60
61	62	63	64	65	66	67	68	69	70
71	72	73	74	75	76	77	78	79	80
81	82	83	84	85	86	87	88	89	90
91	92	93	94	95	96	97	98	99	00

INITIALS AND SURNAME  
 VOORLETTERS EN VAN

DATE OF EXAMINATION  
 DATUM VAN EKSAMEN

EXAMINATION CENTRE (E.G. PRETORIA)  
 EKSAMENSENTRUM (BY PRETORIA)

UNIQUE PAPER NO  
 UNIEKE VRAESTEL NR

--	--	--	--	--

For use by examination invigilator  
 Vir gebruik deur eksamenopsiener

**IMPORTANT**

1. USE ONLY AN HB PENCIL TO COMPLETE THIS SHEET
2. MARK LIKE THIS ➡
3. CHECK THAT YOUR INITIALS AND SURNAME HAS BEEN FILLED IN CORRECTLY
4. ENTER YOUR STUDENT NUMBER FROM LEFT TO RIGHT
5. CHECK THAT YOUR STUDENT NUMBER HAS BEEN FILLED IN CORRECTLY
6. CHECK THAT THE UNIQUE NUMBER HAS BEEN FILLED IN CORRECTLY
7. CHECK THAT ONLY ONE ANSWER PER QUESTION HAS BEEN MARKED
8. DO NOT FOLD

**BELANGRIK**

1. GEBUIK SLEGS 'N HB POTLOOD OM HIERDIE BLAD TE VOLTOOI
2. MERK AS VOLG ➡
3. KONTROLEER DAT U VOORLETTERS EN VAN REG INGEVUL IS
4. VUL U STUDENTENOMMER VAN LINKS NA REGS IN
5. KONTROLEER DAT U DIE KORREKTE STUDENTENOMMER VERSTREK HET
6. KONTROLEER DAT DIE UNIEKE NOMMER REG INGEVUL IS
7. MAAK SEKER DAT NET EEN ALTERNATIEF PER VRAAG GEMERK IS
8. MOENIE VOU NIE

**PART 2 (ANSWERS/ANTWOORDE) DEEL 2**

1	01	02	03	04	05	36	01	02	03	04	05	71	01	02	03	04	05	106	01	02	03	04	05
2	01	02	03	04	05	37	01	02	03	04	05	72	01	02	03	04	05	107	01	02	03	04	05
3	01	02	03	04	05	38	01	02	03	04	05	73	01	02	03	04	05	108	01	02	03	04	05
4	01	02	03	04	05	39	01	02	03	04	05	74	01	02	03	04	05	109	01	02	03	04	05
5	01	02	03	04	05	40	01	02	03	04	05	75	01	02	03	04	05	110	01	02	03	04	05
6	01	02	03	04	05	41	01	02	03	04	05	76	01	02	03	04	05	111	01	02	03	04	05
7	01	02	03	04	05	42	01	02	03	04	05	77	01	02	03	04	05	112	01	02	03	04	05
8	01	02	03	04	05	43	01	02	03	04	05	78	01	02	03	04	05	113	01	02	03	04	05
9	01	02	03	04	05	44	01	02	03	04	05	79	01	02	03	04	05	114	01	02	03	04	05
10	01	02	03	04	05	45	01	02	03	04	05	80	01	02	03	04	05	115	01	02	03	04	05
11	01	02	03	04	05	46	01	02	03	04	05	81	01	02	03	04	05	116	01	02	03	04	05
12	01	02	03	04	05	47	01	02	03	04	05	82	01	02	03	04	05	117	01	02	03	04	05
13	01	02	03	04	05	48	01	02	03	04	05	83	01	02	03	04	05	118	01	02	03	04	05
14	01	02	03	04	05	49	01	02	03	04	05	84	01	02	03	04	05	119	01	02	03	04	05
15	01	02	03	04	05	50	01	02	03	04	05	85	01	02	03	04	05	120	01	02	03	04	05
16	01	02	03	04	05	51	01	02	03	04	05	86	01	02	03	04	05	121	01	02	03	04	05
17	01	02	03	04	05	52	01	02	03	04	05	87	01	02	03	04	05	122	01	02	03	04	05
18	01	02	03	04	05	53	01	02	03	04	05	88	01	02	03	04	05	123	01	02	03	04	05
19	01	02	03	04	05	54	01	02	03	04	05	89	01	02	03	04	05	124	01	02	03	04	05
20	01	02	03	04	05	55	01	02	03	04	05	90	01	02	03	04	05	125	01	02	03	04	05
21	01	02	03	04	05	56	01	02	03	04	05	91	01	02	03	04	05	126	01	02	03	04	05
22	01	02	03	04	05	57	01	02	03	04	05	92	01	02	03	04	05	127	01	02	03	04	05
23	01	02	03	04	05	58	01	02	03	04	05	93	01	02	03	04	05	128	01	02	03	04	05
24	01	02	03	04	05	59	01	02	03	04	05	94	01	02	03	04	05	129	01	02	03	04	05
25	01	02	03	04	05	60	01	02	03	04	05	95	01	02	03	04	05	130	01	02	03	04	05
26	01	02	03	04	05	61	01	02	03	04	05	96	01	02	03	04	05	131	01	02	03	04	05
27	01	02	03	04	05	62	01	02	03	04	05	97	01	02	03	04	05	132	01	02	03	04	05
28	01	02	03	04	05	63	01	02	03	04	05	98	01	02	03	04	05	133	01	02	03	04	05
29	01	02	03	04	05	64	01	02	03	04	05	99	01	02	03	04	05	134	01	02	03	04	05
30	01	02	03	04	05	65	01	02	03	04	05	100	01	02	03	04	05	135	01	02	03	04	05
31	01	02	03	04	05	66	01	02	03	04	05	101	01	02	03	04	05	136	01	02	03	04	05
32	01	02	03	04	05	67	01	02	03	04	05	102	01	02	03	04	05	137	01	02	03	04	05
33	01	02	03	04	05	68	01	02	03	04	05	103	01	02	03	04	05	138	01	02	03	04	05
34	01	02	03	04	05	69	01	02	03	04	05	104	01	02	03	04	05	139	01	02	03	04	05
35	01	02	03	04	05	70	01	02	03	04	05	105	01	02	03	04	05	140	01	02	03	04	05

Specimen only