

APY1501

(475417)

May/June 2014

**THE ANTHROPOLOGICAL STUDY OF CULTURE IN A MULTICULTURAL
CONTEXT**

Duration 2 Hours

60 Marks

EXAMINERS

FIRST

SECOND

MR GH MAREE

PROF S HERSELMAN

Closed book examination

This examination question paper remains the property of the University of South Africa and may not be removed from the examination venue.

This paper consists of 16 pages plus instructions for the completion of a mark reading sheet

PLEASE COMPLETE THE ATTENDANCE REGISTER ON THE BACK PAGE, TEAR OFF AND HAND TO THE INVIGILATOR

- 1 Answer **ALL** the questions Fill in your answers on the **MARK READING SHEET**
- 2 **ONLY ONE** option per multiple-choice question must be selected **NO MARKS** will be given if more than one option is included in an answer
- 3 All multiple-choice questions count **ONE MARK PER QUESTION**

QUESTION 1

Select the option that **CORRECTLY** completes the following statement

Anthropology as an independent discipline is distinguished from other disciplines that study humankind by the fact that anthropology

- 1 is mainly concerned with the study of African societies
- 2 is particularly concerned with the social aspect of human existence
- 3 studies human societies of prehistoric as well as historic times
- 4 is concerned with all facets of human existence

QUESTION 2

Select the option that **CORRECTLY** completes the following statement

Linguistic anthropologists

- 1 study relations between members of a language group in terms of culture
- 2 mainly focus attention on the evolution of languages in prehistorical societies
- 3 study the way in which language is used in different social contexts
- 4 mainly focus on the influence of genetic factors on the development of language

QUESTION 3

Select the option that **CORRECTLY** completes the following statement

Archaeology as a subfield of anthropology studies

- 1 fossil remains of prehistoric human-like beings which have been preserved in the earth's crust
- 2 the development of human beings from very early times
- 3 the physical adaptation of human populations to their environment
- 4 *past living conditions and changes that occurred in human populations during prehistoric times*

QUESTION 4

Select the option that **CORRECTLY** completes the following statement

Sociocultural anthropologists study

- 1 sociocultural variation of human systems around the world
- 2 the influence of biological and demographic factors on the behaviour of members of a society
- 3 the culture of societies to establish their inferiority and superiority in relation to each other
- 4 *culture change that occurred in human societies during prehistoric times*

QUESTION 5

Select the option that **CORRECTLY** completes the following statement

Anthropological information that has been collected by means of the ethnographic method will be regarded as more **meaningful and accurate** when an anthropologist has

- 1 representative statistical surveys that verify the information
- 2 made systematic and relevant cross-cultural comparisons of the information
- 3 interviewed a sufficient number of informants and has participated in relevant cultural activities
- 4 applied the emic and etic research approaches in his/her fieldwork strategies

QUESTION 6

Select the option that **CORRECTLY** completes the following statement

The most important sources of information on a particular sociocultural system are

- 1 those in a society who are directly involved in the aspects under investigation
- 2 statistical surveys and questionnaires
- 3 *key informants (experts) on the history and culture being studied*
- 4 community leaders and 'outsiders' who, through long and intensive involvement with a group, have become well-informed

QUESTION 7

Which one of the following combinations pertaining to anthropological method and explanation has been linked **CORRECTLY**?

1	Social network analysis	Questioning informants about relatives to reconstruct family histories
2	Genealogical method	Questioning informants regarding how other community members view the world
3	In-depth interviewing	Gathering information mainly through quantitative strategies
4	Participant observation	Immersion of the researcher in the daily lives of the people being studied

QUESTION 8

Select the option that **CORRECTLY** completes the following statement

An **holistic approach** to the study of culture means that anthropologists

- 1 attempt to obtain an overall impression of the development of culture
- 2 draw generalisations about the human condition
- 3 study the cultural systems of societies within a global cultural pattern
- 4 study all facets of human life, including the environmental factors to which people must adapt for survival

QUESTION 9

Select the option that **CORRECTLY** completes the following statement

The term _____ refers to the study of a sociocultural system from the 'outside' as a scientist

- 1 etic approach
- 2 participant observation
- 3 ethnography
- 4 ethnocentrism

QUESTION 10

Which one of the following **best** illustrates how an application of the concept of cultural relativism influences the work of anthropologists? An anthropologist

- 1 determines which one of two cultural groups has developed the most effective approach to combating crime
- 2 compares the social structure and social behaviour of different social groups
- 3 interprets the behaviour of people in terms of the sociocultural context in which the behaviour is found
- 4 demonstrates how a social group's culture has been influenced by other social groups with which it has been in contact

QUESTION 11

Select the option that **CORRECTLY** completes the following statement

Ethnographic fieldwork as research method in anthropology

- 1 refers to a comparative study of culture
- 2 is used to gather information on the culture of societies by means of the interviewing of informants and participant observation
- 3 is primarily used to undertake statistical surveys and social network analysis
4. has as its aim the recording of people's own view of their culture

QUESTION 12

Select the option that **CORRECTLY** completes the following statement

The tendency to judge another society by the values and the standards of one's own culture is known as

- 1 multivocality
- 2 reflexivity
- 3 ethnicity
- 4 ethnocentrism

QUESTION 13

Select the option that **CORRECTLY** completes the following statement

Africa is currently failing to produce enough food to feed its own populations. Problems associated with and reasons for this failure which have been identified, include all of the following **EXCEPT** a

- 1 lack of proper leadership
- 2 widening gap between the rich and the poor
- 3 need for constitutional reform
- 4 lack of training among subsistence farmers regarding improved crop production

QUESTION 14

Select the option that **CORRECTLY** completes the following statement

All of the following perspectives or approaches are characteristic of anthropology, **EXCEPT**

- 1 an emic approach which takes cognisance of the way in which the people being studied perceive and categorise the world
- 2 a comparative approach that brings similarities and differences between human populations to the fore
- 3 the concept of sociocultural systems that anthropologists use to try to understand the ways in which people organise their lives
- 4 a research method which enables the anthropologist to produce quantitative data by means of statistical methods, surveys and questionnaires

QUESTION 15

Select the option that **CORRECTLY** completes the following statement

The hominid line includes

- a Australopithecus afarensis
- b Homo erectus
- c Homo habilis
- d Homo sapiens
- e Australopithecus africanus

Choose the **CORRECT** combination

- 1 b, c, d and e
- 2 c and d
- 3 a, b, c, d and e
- 4 a, c and d
- 5 a, b and e

QUESTION 16

Which one of the following combinations of **human classification and characteristics** is **CORRECT**?

1 Hominids	Dwellings made of piled stone or bushes, a highly developed toolkit and, possibly, the use of fire
2 Hominoids	Upright posture which sets the hands free to carry things and manipulate the environment
3 Homo erectus	Developed a remarkable toolkit of fine projectile points and hunted big-game animals by hurling spears
4 Homo sapiens	Developed rituals and normative rules such as the incest taboo

QUESTION 17

Select the option that **CORRECTLY** completes the following statement

Anthropologists generally agree that the concept of a **race**

- 1 comprises a human population differing geographically, morphologically or genetically from other human populations
- 2 cannot be defined biologically and regard perceptions of race as sociocultural constructions
- 3 comprises a human population within which the genetic variation is less than the genetic variation between the population and other human populations
- 4 explains the innate behavioural characteristics which are attributed to various human populations

QUESTION 18

Select the option that **CORRECTLY** completes the following statement

Tattooing

- 1 in all probability already was practised during the Upper Paleolithic era
- 2 has become a rite of passage which aims to empower tattooed people
- 3 is a means by which humans establish themselves as sociocultural beings
- 4 1, 2, and 3
- 5 1 and 3

QUESTION 19

Which one of the following statements about **images and perceptions of the body** is **CORRECT**?

- 1 Tattooing is used universally to signify status and prestige
- 2 The increasing objectification of male bodies is indicative of a shift in the sociocultural ideal of beauty from women to men
- 3 Human bodies are fashioned by sociocultural systems and contexts
- 4 Circumcision is universally performed as a ritual which symbolically transforms boys into men

QUESTION 20

Which of the following statements about **female genital mutilation** are **CORRECT**?

- a Genital cutting is done to deny women sexual pleasure
- b The practice is often enforced by women in an attempt to control the perceived rampant sexual desires of women
- c The practice occurs particularly among African Muslims
- d Genital cutting is **not** universally condemned as an infringement of universal human rights

Choose the **CORRECT** combination

- 1 a and d
- 2 b and c
- 3 a, b and c
- 4 a, b, c and d

QUESTION 21

Select the option that **CORRECTLY** completes the following definition

The scientific study of people's perception and use of space is called

- 1 body politic
- 2 kinesics
- 3 proxemics
- 4 non-verbal communication

QUESTION 22

Which one of the following statements regarding **body language** is **INCORRECT**?

- 1 It has been established that people in all societies nod their heads while saying "yes"
- 2 Nonverbal signals complement spoken messages and can contradict such messages
- 3 Nonverbal signals are not universally the same and therefore one cannot make generalisations about body language applicable to all societies
- 4 It is said that at least 90% of emotional information is transmitted by body language and tone of voice

QUESTION 23

Which of the following statements regarding **human agency** is/are **CORRECT**?

- a Individual action or initiative always plays a role in environmental changes, whether physical or sociocultural
- b Revitalisation movements do not constitute an example of human agency in action
- c Individuals perceive, interpret and manipulate the rules of their society often to meet their own interests
- d An example of human agency is an influential leader who mobilises a community to change their circumstances by action

Choose the **CORRECT** combination

- 1 b
- 2 a and b
- 3 c and d
- 4 a, c and d

QUESTION 24

Which one of the following **best** explains the anthropological concept of **culture**?

- 1 A society's system of thought, behaviour, values and material creations that come into being through close interaction with the natural environment
- 2 The transmission of the accumulated knowledge, rules of behaviour and values of a society from one generation to the next
- 3 Phenomena such as opera, sculpture, writing and other creative achievements associated with civilisations
- 4 Political, economic and religious processes related to the rich variety of forms of society across the world

QUESTION 25

Which one of the following statements regarding the characteristics of culture is **CORRECT**?

- 1 Although some facets of culture are biologically inherited, people mostly learn their culture by growing up in and with it
- 2 For a thought, action or belief to be regarded as cultural, it must be shared by all the members in a group
- 3 Not all sociocultural systems change and therefore one cannot without qualification state that culture is dynamic
- 4 The various systems of culture do not function in isolation but are interdependent

QUESTION 26

Which of the following is/are raised by Eriksen as (an) objection(s) to use of the concept of culture in contemporary society?

The concept of culture should no longer be used in anthropology because

- 1 the use of the plural, cultures, divides human beings in that it emphasises differences between groups of people
- 2 it has been used to discriminate against others and to justify exclusion by means of aggressive nationalism
- 3 now that differences between people are no longer legislated in the world, it has become obsolete
- 4 people at grassroots-level reject it on account of its use as a social engineering tool
- 5 1 and 2

QUESTION 27

Select the option that **CORRECTLY** completes the following statement

All of the following are true for **social and group identity**, **EXCEPT** that

- 1 anthropologists emphasise social identity at the expense of gender identity
- 2 groups create their identity through performance, art and material culture
- 3 'imagined communities' include large scientific or professional groups
- 4 Facebook is used to explore group identities without the constraints of 'real life' boundaries

QUESTION 28

Select the option that **CORRECTLY** completes the following statement

A(n) _____ may be defined as a distinctive set of standards and behaviour patterns by which a group within a larger community functions while sharing some common practices with the larger community

- 1 ethnic group
- 2 imagined community
- 3 culture
- 4 subculture

QUESTION 29

Which one of the following statements regarding **the construction of individual and group identities** is **CORRECT**?

- 1 Identity is not a static category but a continuous process and more accurately could be called identification
- 2 'Politics of identity' refers to a process through which a government attempts to mould ethnic identities into relatively fixed frames so that they can act politically
- 3 'Identity politics' refers to a process in which ethnic and racial identities contest the structures of power that constrain them
- 4 The construction of gender identity universally is based on genital anatomy

QUESTION 30

Select the option that **CORRECTLY** completes the following statement

A descent group characteristic of certain societies in South Africa that derives its name from an apical ancestor and whose membership is based on genealogical descent is a

- 1 moiety
- 2 clan
- 3 phratry
- 4 lineage

QUESTION 31

Which one of the following **BEST** describes the alliance theory of exogamy?

One must marry someone from

- 1 a hostile neighbouring group to temper the hostile relations between the groups
- 2 outside one's descent group to facilitate social cohesion within a community
- 3 outside one's descent group to strengthen the power basis of the ruling group in a community
- 4 outside one's descent group to prevent competition for available marriage partners which will disrupt the internal solidarity of a group

QUESTION 32

Select the option that **CORRECTLY** completes the following statement

The term **patronymy** means that

- 1 succession is through the father's line
- 2 authority is in the hands of the father and his male kin
- 3 children bear the family name of the father
- 4 residence after marriage is with the father's people
- 5 a woman's behaviour is governed by strict rules when she lives among her husband's kin

QUESTION 33

Which of the following, regarding **marriage among Xhosa-speaking societies** and **clan membership** in general, is **CORRECT**?

- 1 Excepting for the father's and the mother's clans, a person in Xhosa society may marry someone belonging to any other clan
- 2 In patrilineal societies a woman retains her clan name after marriage but does not pass it on to her children
- 3 Residence after marriage is with the clan of the husband's maternal grandfather
- 4 Among Xhosa-speakers, children born from a marriage inherit property through their mother

QUESTION 34

First decide whether Statements A, B and C, which relate to the choice of marriage partners and the conclusion of marriage among Sotho-speaking groups, are **CORRECT** or **INCORRECT** and then choose the **CORRECT** option from those given below

Statement A

The conclusion of marriage comprises a series of legal, ritual and ceremonial acts

Statement B

Pedi-speaking people believe that marriage between cross-cousins strengthens relations between kin-groups

Statement C

The transfer of marriage goods gives security to the bride after the conclusion of a marriage

- 1 Only Statements A and B are correct
- 2 Only Statements A and C are correct
- 3 Only Statement A is correct
- 4 Only Statement B is correct
- 5 Statements A, B and C are correct

QUESTION 35

Select the **INCORRECT** statement

Kinship diagrams can be used by anthropologists to

- 1 gain insight into whom a person is supposed to marry in Sotho-speaking societies
- 2 conclude who would officiate as ritual leader during a ritual among Sotho-speaking societies
- 3 verify the genealogical descent of clan members from their common ancestor
- 4 visually represent where and with whom a newly married couple should live in patrilineal societies

QUESTION 36

Select the option that **CORRECTLY** completes the following statement

In South Africa a ghost marriage takes place when

- 1 a man's wife dies and he takes her sister as an ancillary or substitute wife
- 2 the brother or another male relative continues a deceased man's marriage, assuming his sexual privileges and cares for the widow and her children
- 3 the brother or another male relative of a deceased man marries a woman and raises children in the deceased man's name to continue his lineage

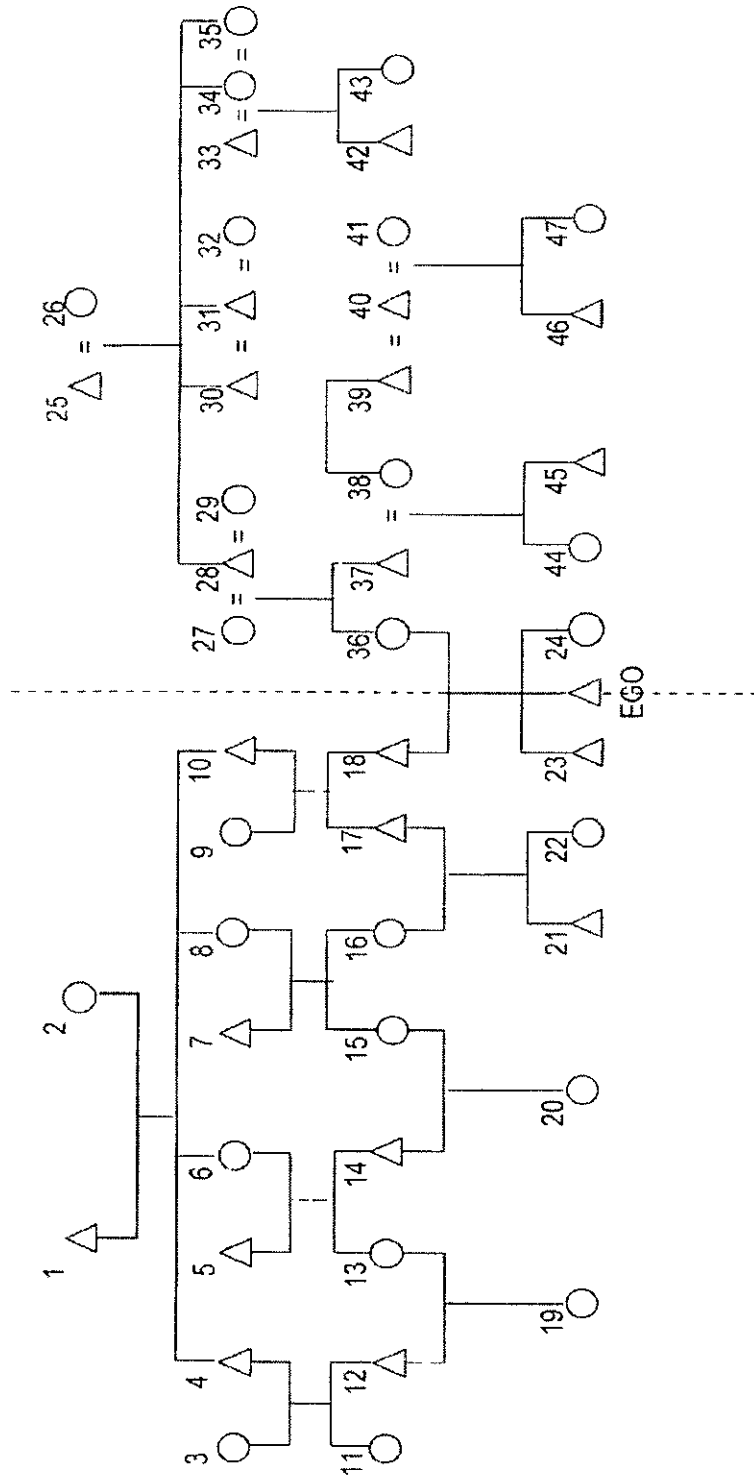
QUESTION 37

Select the option that **CORRECTLY** completes the following statement

In South Africa clans are usually

- 1 localised groups
- 2 corporate groups
- 3 exogamous groups
- 4 matrilineal groups

ANSWER QUESTIONS 38 TO 45 WITH REFERENCE TO THE FOLLOWING DIAGRAM.



QUESTION 38

Through which of the following persons would EGO trace his descent in a **double descent system**?

- 1 27, 28, 29 and 36
- 2 1 and 2, 9 and 10, 18 and 36
- 3 9, 10 and 18 as well as 27, 28 and 36
- 4 1, 10 and 18 as well as 27 and 36

QUESTION 39

Whom of the following relatives are selected **CORRECTLY**?

- 1 Parallel cousins 22 and 24
- 2 Patrilineal kin 11 and 13
- 3 Cross cousins 21 and 44
- 4 Affines 38 and 44

QUESTION 40

Which marriage in the diagram is an example of **sororal polygyny**? The marriage between

- 1 30, 31 and 32
- 2 39, 40 and 41
- 3 33, 34 and 35
- 4 27, 28 and 29

QUESTION 41

Select the option that **CORRECTLY** completes the following statement

If 6, 12 and 17 belongs to the same descent group as 4, 8, 19 and Ego, their system of descent reckoning is

- 1 cognatic
- 2 double
- 3 patrilineal
- 4 matrilineal
- 5 parallel

QUESTION 42

Who is the **apical ancestor of the patrilineage** to which 22 belongs?

- 1 10
- 2 1
- 3 7
- 4 2

QUESTION 43

Which of the following selects the **relationship of 7 and 13 CORRECTLY**?

- 1 FaBrWi
- 2 MoSiHu
- 3 FaSiDa
- 4 MoBrWi

QUESTION 44

Which of the following represents a **cross-cousin marriage**? The union between

- 1 31 and 32
- 2 16 and 17
- 3 37 and 38
- 4 14 and 15

QUESTION 45

Who would exercise authority over **44** and **45** if they are members of a group with a **matrilineal descent system**?

- 1 25
- 2 37
- 3 27
- 4 39

QUESTION 46

Select the option that **CORRECTLY** completes the following statement

Among the matrilineal Wambo of Namibia, when a girl has undergone the initiation ceremony, she

- 1 bears legitimate children, even if she is not married
- 2 is considered to be an adult, but does not have the same status as a married woman
- 3 must preferably marry the boy who was promised to her during her childhood
- 4 may marry without the consent of her parents and family

QUESTION 47

Select the option that **CORRECTLY** completes the following statement

In South Africa, the transfer of marriage goods

- a gives the groom and his descent group the right to marry the bride and the right to any children born of the marriage
- b essentially constitutes an economic transition because it transfers ownership of the wife to the groom and his descent group
- c occurs after agreement has been reached on the amount of the goods in consideration of the beauty, age, virginity and level of education of the bride
- d is compulsory and may take the form of money, food, agricultural implements and livestock

Choose the **CORRECT** combination

- 1 a and d
- 2 b and c
- 3 a, c and d
- 4 a, b, c and d

QUESTION 48

Select the option that **CORRECTLY** completes the following statement

Anthropologists study **religion** in order to

- 1 rank religions according to a developmental scale from inferiority to superiority
- 2 obtain factual knowledge of the supernatural
- 3 distinguish between false and true religions
- 4 understand a religious system in terms of its meaning for its followers

QUESTION 49

Select the option that **CORRECTLY** completes the following statement

Religion and **magic** are distinguished as analytical concepts on the basis that

- 1 religion is associated with personal supernatural beings, whereas magic is associated with impersonal powers
- 2 religion is associated with the intention to manipulate, whereas magic is associated with an attitude of dependence
- 3 religion is found universally, whereas magic is confined to non-western societies
- 4 religion creates social cohesion, whereas magic advances social disintegration

QUESTION 50

Which one of the following concepts represents the idea of the **active involvement of the deity or deities** in the everyday affairs of humans?

- 1 Polytheism
- 2 Monotheism
- 3 Deism
- 4 Atheism
- 5 Theism

QUESTION 51

Which one of the following is believed to become the **temporary abode of supernatural powers or spirits**? A(n)

- 1 fetish
- 2 amulet
- 3 talisman
- 4 familiar

QUESTION 52

Which one of the following is an impersonal power that works in living beings as well as non-living objects?

- 1 *Umlaza*
- 2 *Mana*
- 3 *Pancankam*
- 4 *Malopo*

QUESTION 53

Select the option that **CORRECTLY** completes the following statement

Communities who practise ancestor cults generally believe that ancestors

- 1 denote deceased people who live in the world of the ancestors
- 2 have unlimited knowledge of the living
- 3 can influence their living close kin as well as non-kin
- 4 do not usually send misfortune and ill-health to their close kin

QUESTION 54

Select the option that **CORRECTLY** completes the following statement

In anthropological theory the concept of **myth** is used to refer to

- 1 tales of fictitious events based on irrational ideas
- 2 a primitive form of scientific thinking
- 3 tales of cosmic origins and their meanings
- 4 oral tradition of verifiable historical events

QUESTION 55

Which one of the following ritual leaders provides knowledge of the supernatural by using standardised procedures to interpret evidence found in various signs?

- 1 Priest
- 2 Prophet
- 3 Herbalist
- 4 Diviner

QUESTION 56

Which one of the following statements regarding the **supernatural** is **CORRECT**?

- 1 Most people have clear views about the exact nature of the supernatural elements found in their society
- 2 In many languages there is no equivalent for the English term 'supernatural', which selects that the supernatural does not exist for speakers of such languages
- 3 In terms of a 'western worldview' no clear distinction is made between humans, nature and the supernatural
- 4 In communities around the world, perceptions of the supernatural change over time

QUESTION 57

Which one of the following is an important characteristic of the *malopo-cult*?

- 1 The focal point in the treatment of a sick medium is the application of a divination method called *ukuvumisa*
- 2 The cult empowers women and focuses on the needs of female members
- 3 Cult members enjoy a higher status than traditional diviners in society
- 4 Men still take the final decisions in ritual affairs

QUESTION 58

Select the option that **CORRECTLY** completes the following statement

According to the Gcaleka of the Eastern Cape, ritual impurity ensues when a

- 1 woman enters the cattle kraal
- 2 menstruating woman touches a pig
- 3 person touches fatty meat
- 4 man enters the female side of the domestic dwelling

QUESTION 59

Select the option that **CORRECTLY** completes the following statement

Among the Northern Sotho, the **malopo-cult** is closely associated with

- 1 the ancestor spirits
- 2 the Supreme Being
- 3 punishment for wrongs
- 4 myths about their origin
- 5 sorcery

QUESTION 60

First decide whether Statements A, B and C which relate to **the meaning of rituals** are **CORRECT** or **INCORRECT** and then choose the **CORRECT** option from those given below

Statement A

Rituals contain symbolic elements

Statement B

Water is associated with coolness and purification

Statement C

The purpose of rituals may be the establishment, maintenance or restoration of relations with the supernatural

- 1 Only Statements A and B are correct
- 2 Only Statements A and C are correct
- 3 Only Statement A is correct
- 4 Only Statement B is correct
- 5 Statements A, B and C are correct

TOTAL: [60]

