

APY1501

(479231) October/November 2014

**THE ANTHROPOLOGICAL STUDY OF CULTURE IN A MULTICULTURAL
CONTEXT**

Duration 2 Hours

60 Marks

EXAMINERS :

FIRST

SECOND

MR GH MAREE

PROF S HERSELMAN

Closed book examination

This examination question paper remains the property of the University of South Africa and may not be removed from the examination venue.

This paper consists of 20 pages PLUS instructions for the completion of a mark reading sheet.

PLEASE COMPLETE THE ATTENDANCE REGISTER ON THE BACK PAGE, TEAR OFF AND HAND TO THE INVIGILATOR.

1. Answer **ALL** the questions. **FILL IN YOUR ANSWERS ON THE MARK READING SHEET.**
2. **ONLY ONE** option per multiple choice questions must be selected. **NO MARKS** will be given if more than one option is included in an answer.
3. All multiple choice questions count **ONE MARK PER QUESTION.**

QUESTION 1

Select the option that **CORRECTLY** completes the following statement:

An important difference between anthropology and the other human sciences is that anthropology is

1. mainly concerned with the study of nonindustrial societies.
2. mainly concerned with the social activities of societies.
3. concerned with all facets of human existence.
4. concerned with the organisation, functioning and development of human societies.

QUESTION 2

Select the option that **CORRECTLY** completes the following statement.

Sociocultural anthropologists focus on the

1. relation between language and the other aspects of the life of a society.
2. lifestyles of the rich diversity of societies as they are found worldwide.
3. influence of biological and hereditary characteristics on behaviour of members of a society
4. material remains of societies which are collected during excavation of sites where people once lived.

[TURN OVER]

QUESTION 3

Which one of the following **best** describes **anthropology** as a **comprehensive discipline**?

1. A study of human cultural diversity worldwide
2. A study of human diversity worldwide and throughout time
3. A humanistic study of human diversity worldwide and throughout time
4. A study of human biological diversity worldwide

QUESTION 4

Select the option that **CORRECTLY** completes the following statement:

The anthropological fieldwork methodology is **distinguished from** the methodologies of other disciplines that study human beings by its

1. method of gathering information mainly through quantitative techniques.
2. statistical analysis of the unique customs of nonliterate people found in remote corners of the world.
3. surveying method of the material remains of human settlements that provide important information on the living conditions of societies.
4. firsthand, direct and intensive contact with people in order to observe and describe their culture.

QUESTION 5

Select the option that **CORRECTLY** completes the following statement:

If an excessively **cultural relativistic** approach is followed in anthropology

1. cultural practices that have a harmful impact on a society might not be questioned
2. the researcher might adopt an ethnocentric approach to the study of people.
3. statistical data relevant to an investigation might be misinterpreted.
4. the researcher's beliefs might influence the results of his/her investigation.

QUESTION 6

Select the option that **CORRECTLY** completes the following statement:

The anthropological perspective that implies that a custom or religious conviction of a society should be understood and described objectively within the context of the culture in which it is found, is known as

1. holism.
2. cultural relativism
3. ethnicity
4. ethnocentrism.

[TURN OVER]

QUESTION 7

From the options below, select the concept that **CORRECTLY** completes the following statement

The anthropological principle of _____ allows anthropologists to be perceptive of the specific way in which societies develop their sociocultural systems according to their needs and local situations.

- 1 holism
2. cross-cultural comparison
- 3 cultural relativism
4. ethnocentrism

QUESTION 8

Select the option that **CORRECTLY** completes the following statement

The **emic** approach is

- 1 combined with the etic approach by anthropologists in their ethnographic fieldwork strategies to gain the most objective view of the culture of a society.
- 2 similar to ethnocentrism because it gives a perspective from inside a culture
3. a recently developed, subjective research strategy to determine the attitudes of people during research.
- 4 a research strategy that gives priority to the interpretations of the anthropologist as researcher.

QUESTION 9

Select the option that **CORRECTLY** completes the following statement

The **reflexive approach** in anthropological research can be described as a(n)

1. interpretation of the culture being studied according to the standards and values of the researcher.
- 2 subjective involvement in the lives of the people being studied.
- 3 objective interpretation of culture using anthropological research methods.
- 4 awareness of how members of a society understand their own roles within their society

QUESTION 10

From the options below, select the concept that **CORRECTLY** completes the following statement

The concept of _____ refers to both the process and the product of fieldwork.

- 1 etic description
- 2 enculturation
3. ethnography
4. ethnocentrism

[TURN OVER]

QUESTION 11

According to the applied anthropologist, John van Willigen, which of the following are fields of application and practical work by anthropologists?

- a. Conflict resolution
- b. Wildlife management
- c. Design and architecture
- d. Cultural tourism
- e. Missionary work

Choose the **CORRECT** combination.

- 1 a and d
- 2 a, d and e
- 3 b, c and d
- 4 a, b, c, d and e
- 5 a, b and e

QUESTION 12

Select the option that **CORRECTLY** completes the following statement:

A recent survey of the University of South Africa's Bureau of Market Research indicates that despite the significant growth in the number of so-called 'black diamonds' in the country,

1. more than half of all South Africans still fall in the lowest income bracket
2. the skills shortage is worsening and preventing millions of South Africans from gaining access to the modern knowledge-economy.
3. socioeconomic inequalities in the country are greater than ever.
4. 1 and 3
5. 1, 2 and 3

QUESTION 13

Which of the following is **NOT** applicable to the anthropologist's involvement in development projects?

- 1 Acting as a mediator between the local community and the planners of a project
- 2 Doing social impact studies to avoid disrupting the local community during the implementation of a project
- 3 Co-operating with other scientists as part of a multidisciplinary team which is planning a development project
- 4 Providing technical information on the geographical area targeted for the development project

[TURN OVER]

QUESTION 14

Select the option that **CORRECTLY** completes the following statement.

Based on sound anthropological knowledge of the local people and the natural environment, the famine in the 1960s in the Sahel region of Africa could have been avoided if the

1. government planners had concentrated on increasing the number of wells in the region.
2. nomadic pastoralists of the Sahel had been encouraged to settle in urban areas.
3. government had included knowledge of the culture and ecology of the people concerned in its planning.
4. international relief programmes that were launched to alleviate the crisis, had supplied food relief in the form of grain.

QUESTION 15

From the options below, select the species that **CORRECTLY** completes the following statement

The species . lived in camps of piled stone or bushes, had a highly developed toolkit and, possibly, the use of fire

1. *Australopithecus afarensis*
2. *Homo erectus*
3. *Australopithecus africanus*
4. *Homo habilis*

QUESTION 16

According to physical anthropologists, which of the following statements regarding 'human nature' is/are **CORRECT**?

- a. There are limitations on human behaviour and only specific variations are possible.
- b. The capacity of speech is what distinguishes humans from animals.
- c. Despite the huge diversity found among humans, they are remarkably similar.
- d. Human nature is unchangeable and characteristic of a specific group of people.

Choose the **CORRECT** option.

1. a, b and c
2. b and c
3. b
4. a, b, c and d
5. c

[TURN OVER]

QUESTION 17

Which of the following statements about images and perceptions of the body are **CORRECT**?

- a In communities all over the world women display male wealth and prestige on and by their bodies.
- b Tattooing is a means by which humans establish themselves as sociocultural beings.
- c Human bodies are influenced by their sociocultural systems and contexts.
- d As a rule circumcision is used to signify status and prestige.

Choose the **correct** combination.

- 1. a, b and d
- 2. c and d
- 3. a, b and c
- 4. a and c
- 5. a, c and d

QUESTION 18

Which of the following statements regarding the **concept of race** is/are **CORRECT**?

- a. The superficial or external features of humans in particular were initially used to classify them into races.
- b. The classification of humans according to racial characteristics is unscientific and often based on stereotypes that stem from prejudice
- c. Scientists are more likely than lay people to classify humans into races on the grounds of their biological features.
- d. Inborn behavioural predispositions such as alcoholism and drug abuse can be linked to specific races.

Choose the **CORRECT** option

- 1. a and b
- 2. b, c and d
- 3. a, b and c
- 4. a, b, c and d
- 5. a

[TURN OVER]

QUESTION 19

Which of the following statements regarding communal and individual initiation of young people in Southern African communities are **CORRECT**?

- a. Initiation forms an essential part of the transformation process by which young people are guided into adulthood.
- b. In most South African indigenous communities, the initiation process coincides with physical puberty.
- c. Circumcision is an integral part of male initiation, especially among the Zulu and the Swazi.
- d. Clitoridectomy is not usually part of female initiation, except probably among the Tsonga in Mozambique

Choose the **CORRECT** combination

1. a and b
2. c and d
3. a, b and d
4. a, b, c and d

QUESTION 20

Which of the following statements regarding **body language** are **CORRECT**?

- a. Full understanding of verbal messages is only possible with the aid of body language
- b. It has been established that people in all societies nod their heads while saying "yes".
- c. Societies world-wide have different norms with regard to the use of personal space
- d. In Spain, England and the USA people stand close to each other, and even touch, when talking.

Choose the **correct** combination.

1. a, c and d
2. a and d
3. c and d
4. a, b, c and d
5. a and c

QUESTION 21

Out of the options below, select the term that **CORRECTLY** completes the following statement.

The term .. refers to the interpretation of body language such as facial expressions, gestures and posture

1. kinesics
2. proxemics
3. body politics
4. phonemics

[TURN OVER]

QUESTION 22

Which one of the following statements regarding the characteristics of culture is **CORRECT**?

1. Although some facets of culture are biologically inherited, people mostly learn their culture by growing up in and with it
2. For a thought, action or belief to be regarded as cultural, it must be shared by all the members in a group.
3. Because culture is shared by members of a community, its content is exactly the same for each individual of the community
4. The most important symbolic feature of culture is language which enables humans to transmit information

QUESTION 23

Select the option that **CORRECTLY** completes the following statement:

The concept **integration of culture** refers to

1. the process whereby individuals learn the culture of their society
2. a degree of uniformity in the behaviour of members of a society
3. cultural components which are interdependent and form a coherent whole.
4. dynamic relationships which exist between sociocultural phenomena.

QUESTION 24

Select the option that **CORRECTLY** completes the following statement:

Humans are set apart from animals on the basis that they, in contrast to animals,

1. use tools to adapt to their environment.
2. have the ability to communicate symbolically.
3. must be taught how to behave
4. share their behaviour with members of their group

QUESTION 25

Select the option that **CORRECTLY** completes the following statement

Culture is

1. acquired
2. biologically inherited.
3. static
4. confined to human ideas

[TURN OVER]

QUESTION 26

Select the option that **CORRECTLY** completes the following statement:

All of the following are functions of bodily decorations and adornments **EXCEPT**

1. accentuating erogenous areas of the body
2. indicating changes in the status of individuals.
3. signifying gender equality in societies.
4. designating occupations of individuals.

QUESTION 27

Which one of the following statements regarding **gender and/or sexuality** is **CORRECT**?

1. In some societies the construction of gender identity is based on density of flesh and bone
2. The increasing objectification of male bodies is indicative of a shift in the sociocultural ideal of beauty from women to men.
3. Most societies distinguish three gender categories, namely male, female and homosexual
4. It is generally accepted that gender is a set of variable social constructions which is placed on differentiated bodies.

QUESTION 28

Select the option that **CORRECTLY** completes the following statement.

Enculturation

1. refers to the human ability and capacity to imitate and learn from the environment
2. means that human behaviour is both inherited or instinctive and learned.
3. is the way culture is transmitted or carried over from one generation to the next
4. refers to the acquisition of knowledge through informal learning activities only.

[TURN OVER]

QUESTION 29

Beliefs, values, behaviours and expectations which are shared link people together in groups. Match the human groups listed in **Column A** to the corresponding description in **Column B** and then select the **CORRECT** option

COLUMN A	COLUMN B
a. Society	i. An organised group that is localised, self-perpetuating, has easily identifiable boundaries and who act together for their wellbeing and survival
b. Community	ii. A way of referring to a group which shares a distinctive set of standards and behaviour patterns by which the group functions, while still sharing some common practices with the larger groupings from which they stem
c. Ethnic group	iii. A construct of anthropologists to describe an organised group of interdependent people who generally share a common territory and language, and who act together for their wellbeing and survival
d. A subculture	iv. People who collectively and explicitly identify themselves as a distinct group based on various sociocultural features, such as customs and beliefs

Choose the **CORRECT** combination

1. a-i, b-ii, c-iv, d-iii
2. a-iii, b-i, c-ii, d-iv
3. a-ii, b-iv, c-i, d-iii
4. a-iii, b-i, c-iv, d-ii

QUESTION 30

Which of the following may be used to distinguish an **ethnic group**?

- a. A common genetic basis
- b. Food preferences
- c. Art
- d. Language

Choose the **correct** option.

1. a and d
2. b, c and d
3. a, b, c and d
4. d
5. a

[TURN OVER]

QUESTION 31

Which one of the following concerning **group** and **system of descent reckoning** is **CORRECTLY** matched?

1.	San/Bushmen of the Kalahan	unilineal descent
2.	Saha of Colombia	cognatic descent
3.	Xhosa of the Eastern Cape	parallel descent
4.	Herero of Namibia	double descent

QUESTION 32

Which of the following is an **association between two or more clans** that results when a clan splits into two or more independent clans? A

1. moiety
2. phratry
3. lineage
4. hierarchy of clans

QUESTION 33

Select the option that **CORRECTLY** completes the following statement:

The term **matronymy** means that

1. inheritance of property is through the mother
2. residence after marriage is with the mother's kin group.
3. a man is succeeded first by his Br and then by his SiSo.
4. children bear the family name of the mother.

QUESTION 34

Select the option that **CORRECTLY** completes the following statement:

The practice of dowry giving in the event of a marriage, as practised in India, parts of Eastern Europe, France and Italy, involves the transference of goods or money

- 1 from the bride's family to the bride herself.
- 2 from the groom and his descent group to the bride's father.
- 3 between the respective descent groups.
- 4 from the bride's descent group to the groom's descent group

[TURN OVER]

QUESTION 35

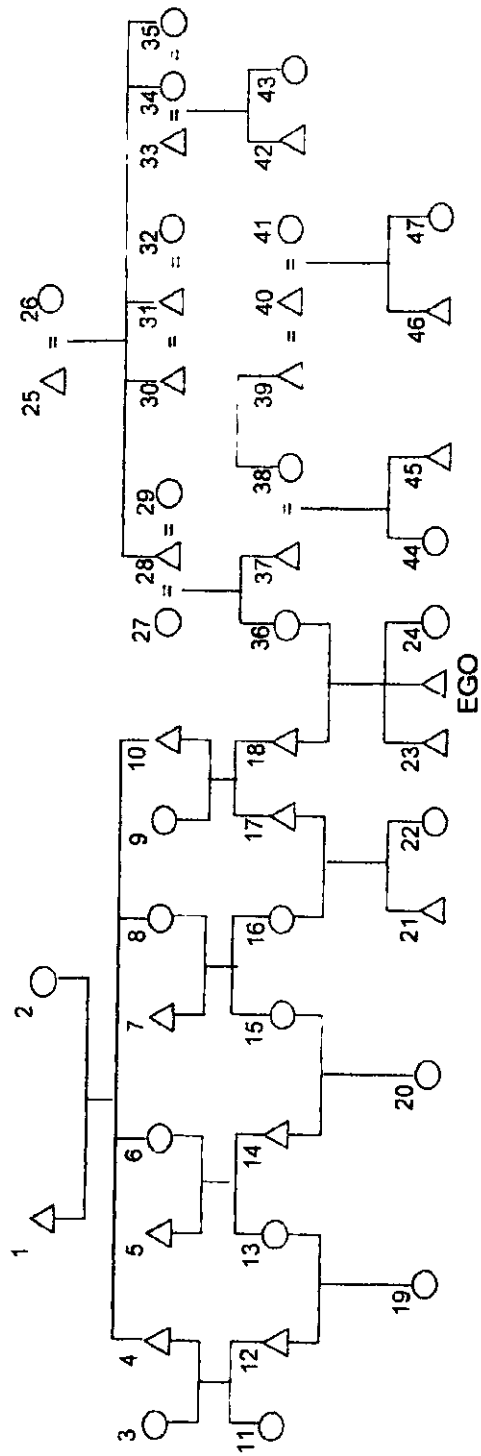
Select the option that **CORRECTLY** completes the following statement:

The practice in which a prospective bridegroom is expected to choose a bride from another descent group, but from within the village where he lives, is known as

1. lineage exogamy.
2. sororal polygyny.
3. local group endogamy.
4. heterogeneous polyandry.

ANSWER QUESTIONS 36 TO 43 WITH REFERENCE TO THE FOLLOWING DIAGRAM.

[TURN OVER]



QUESTION 36

Which of the following indicates the relationship between 30 and EGO CORRECTLY?

- 1 MoFaBr
- 2 FaSiSo
- 3 FaSiHu
- 4 MoBrWi

QUESTION 37

Through whom of the following persons would EGO trace his descent in a **double descent system**?

- 1 1 and 2, 9 and 10 as well as 18 and 36
- 2 1, 10 and 18 as well as 27 and 36
- 3 9, 10 and 18 as well as 27, 28 and 36
- 4 1, 10 and 18 as well as 26, 27 and 36

QUESTION 38

Who will exercise authority over EGO, 23 and 24 if they are members of a group with a **matrilineal descent system**?

- 1 18
- 2 36
- 3 27
- 4 37
- 5 26

QUESTION 39

Which of the following indicates the correct relationship between the following kin?

- 1 23 is a patrilineal kin member of 2
- 2 4 is a sibling of 8
- 3 4 is an affine of 8
- 4 23 is a parallel kin member of 2

QUESTION 40

Who is the **apical ancestor of the patrilineage** to whom 20 belongs?

- 1 10
- 2 1
- 3 5
- 4 4

[TURN OVER]

QUESTION 41

Select the option that **CORRECTLY** completes the following statement:

The marital arrangements of which 41 in the diagram forms a part, is an example of

1. sororal polygyny
2. heterogeneous polyandry.
3. polygyny.
4. fraternal polyandry.

QUESTION 42

Which of the following represents a **parallel-cousin marriage**? The union between

1. 37 and 38
2. 14 and 15
3. 12 and 13
4. 18 and 36

QUESTION 43

Which of the following would EGO **NOT** be able to marry if he is a **Xhosa-speaker**? Someone from the same clan as

1. 3
2. 11
3. 7
4. 15

QUESTION 44

Which of the following are core functions of the **Makhadzi** among the Venda?

- a. Naming of children
- b. Spiritual healing of clan members
- c. Being present when traditional leaders are appointed and confirmed
- d. Partaking when sacrifices are brought to the ancestor spirits

Choose the **CORRECT** combination.

1. b and d
2. a and c
3. a, b, c and d
4. a, c and d

[TURN OVER]

QUESTION 45

Which one of the following statements regarding the levirate is **INCORRECT**?

1. The levirate is practised by certain Southern Nguni such as the Mpondo
2. A wife and her children are cared for by the deceased husband's kin group
3. The levirate is primarily a union between two descent groups.
4. The brother or another male relative of the deceased man marries the widow so that he can raise children for the deceased.

QUESTION 46

Which of the following marriage unions represents a continuation of marriage after death of one of the marriage partners?

1. Polygamy
2. Fraternal polyandry
3. Sororal substitution
4. Alliance endogamy
5. Sororal polygyny

QUESTION 47

Exogamy is a prohibition against marriage between members of a particular group such as a family, lineage or clan. Which of the following statements concerning exogamy is correct?

1. Because individuals are restricted in their choice of marriage partners, exogamy promotes competition among kin over marriage partners
2. Exogamy increases conflict in kin groups because the transfer of marriage goods to other kin groups has the result that they relinquish ownership of marriage goods.
3. Exogamy is a phenomenon which is found among all indigenous groups of South Africa.
4. Rules of exogamy do not necessarily coincide with incest prohibitions.

QUESTION 48

Select the option that **CORRECTLY** completes the following statement

Among the Southern Ndebele, members of the Mahlangu and Kabinde clans may not intermarry. Apparently, this prohibition stems from the relationship between the two clans in terms of which

1. a member of the Kabinde clan acts as medicine man to the king, who is a member of the Mahlangu clan, and that the medicine used may be dangerous to such unions
2. a member of the Kabinde clan may substitute a member of the Mahlangu clan in a levirate union.
3. a marriage between members of the these clans constitute incest because of the common origin of the two related clans.
4. 1 and 2

[TURN OVER]

QUESTION 49

Select the option that **CORRECTLY** completes the following statement.

Magic is associated with

1. an attitude of dependence.
2. the intention to manipulate.
3. personalised spiritual beings.
4. a primitive code of ethics.

QUESTION 50

Various theories have been proposed to explain the origin of religion. Match the theorist in Column A to the corresponding theory in Column B and then select the **CORRECT** option.

COLUMN A	COLUMN B
a. Edward Tylor	i. Religion is born from the universal need to find comfort in time of crises
b. Bronislaw Malinowski	ii. Religion originates from society and serves social, rather than psychological, needs.
c. Sigmund Freud	iii. Religion originated in people's speculation about dreams, trances and death.
d. Emile Durkheim	iv. Religion is a form of reversal to an infantile need for security and certainty.

Choose the **CORRECT** combination.

1. a: i, b: ii, c: iv, d: iii
2. a: iii, b: iv, c: ii, d: i
3. a: ii, b: iii, c: i, d: iv
4. a: iii, b: i, c: iv, d: ii

QUESTION 51

Which one of the following concepts represents the idea of the deity or gods **withdrawing from the world after the act of creation and of having no involvement in the daily life of people?**

1. Polytheism
2. Monotheism
3. Deism
4. Atheism
5. Theism

[TURN OVER]

QUESTION 52

Which one of the following statements that refer to **ideas, objects and concepts about the supernatural** is **CORRECT**?

1. A totem is an animal or plant that can be used by members of the totemic group for good or evil purposes.
2. A fetish is the abode of influential ancestral spirits in some tribal groups and is kept in the homestead of the tribal leader.
3. Amulets are objects that contain supernatural powers and ingredients through which the supernatural may be evoked
4. Mana is an impersonal power that is closely connected to the concept of taboo and therefore people with mana should be avoided.

QUESTION 53

Which of the following use beings with supernatural characteristics and qualities to achieve their own evil purposes?

1. Witches
2. *Malopo*
3. Alien spirits
4. Sorcerers
5. Diviners

QUESTION 54

Select the option that **CORRECTLY** completes the following statement:

Myths that explain the origin of death can be interpreted anthropologically as

- 1 explanations of how humans rationally and practically should deal with death
- 2 symbolically and poetically formulated understandings of the nature of death
- 3 primitive science
- 4 a mixture of superstition and irrational ideas.

QUESTION 55

Which one of the following is **NOT** an example of a ritual act?

1. Purification to heal the body and spirit
2. Contracting a civil marriage in court
3. Confessing one's wrongdoings to a spiritual leader
4. Killing an animal for the benefit of a supernatural being

[TURN OVER]

QUESTION 56

Select the option that **CORRECTLY** completes the following statement

Rituals performed when migrant workers return home from the urban areas are examples of

1. cyclical rituals
2. occasional rituals.
3. symbolic rituals
4. general rituals

QUESTION 57

Select the option that **CORRECTLY** completes the following statement.

A **ritual leader** who claims to have supernatural powers of healing and imparts knowledge of the supernatural is a

1. herbalist
2. traditional healer.
3. priest
4. shaman.

QUESTION 58

Which one of the statements regarding the *malopo* cult is **INCORRECT**?

The *malopo* cult

1. has therapeutic value because it decreases stress and alienation in modern Northern Sotho society.
2. has largely replaced the traditional medical practices of Northern Sotho-speakers because of changing perceptions of the causation of illness.
3. provides a source of income for many women living in rural areas of the Limpopo and Mpumalanga provinces.
4. confirms the close ties between the living and the deceased because the ancestor spirits are continuously consulted about decisions that must be made.

[TURN OVER]

QUESTION 59

Which of the following statements regarding ritual are **CORRECT**?

- a. A ritual may be a very complex activity involving large numbers of people.
- b. A ritual may involve a combination of actions, words and objects.
- c. The actions performed at a ritual are restricted to ritual occasions only.
- d. Ritual acts are always approved of by a particular community

Choose the **CORRECT** combination.

- 1 a and b
- 2 c and d
- 3 a, b and c
- 4 a, b, c and d

QUESTION 60

Select the option that **CORRECTLY** completes the following statement.

Religious fundamentalists

- 1. are generally regarded as antimodernists.
- 2. emphasise the use of modern technology to achieve their religious objectives.
- 3. identify themselves strongly with the larger religious groups from which they evolved
- 4. do not distinguish clearly between a secular and a sacred life.

TOTAL: [60]

